



CONFLUENCE

Steering Committee Meeting #1

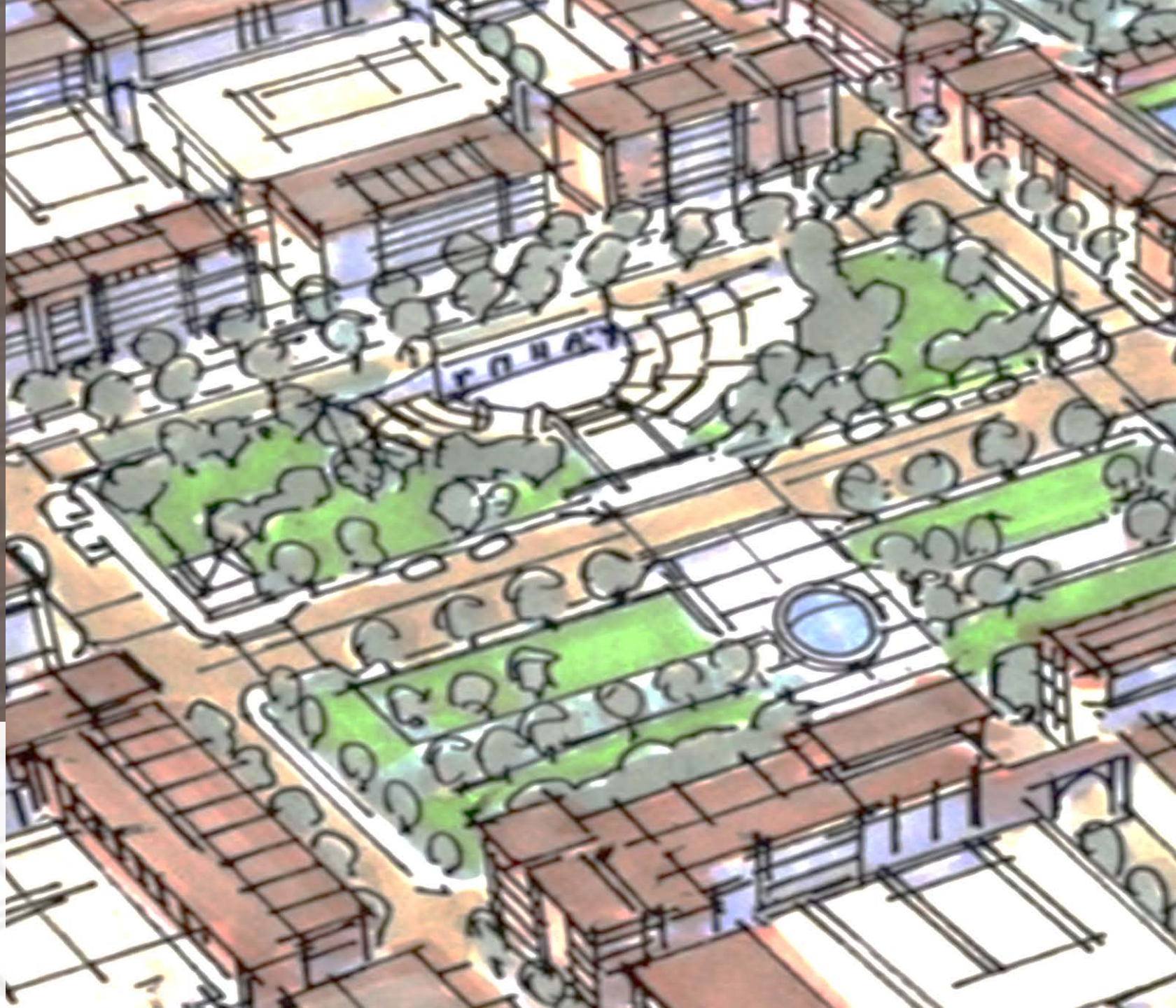
ROE BOULEVARD AND JOHNSON DRIVE CORRIDOR PLAN ROELAND PARK, KS

03.20.2019

CONFLUENCE

IN ASSOCIATION WITH

Collin Noteis & Associates | WSP



AGENDA

- Introduction
- Purpose of the Project
- Our Team
- Process + Timeline
- Study Overview
- Advisory Input
- Next Steps



PURPOSE



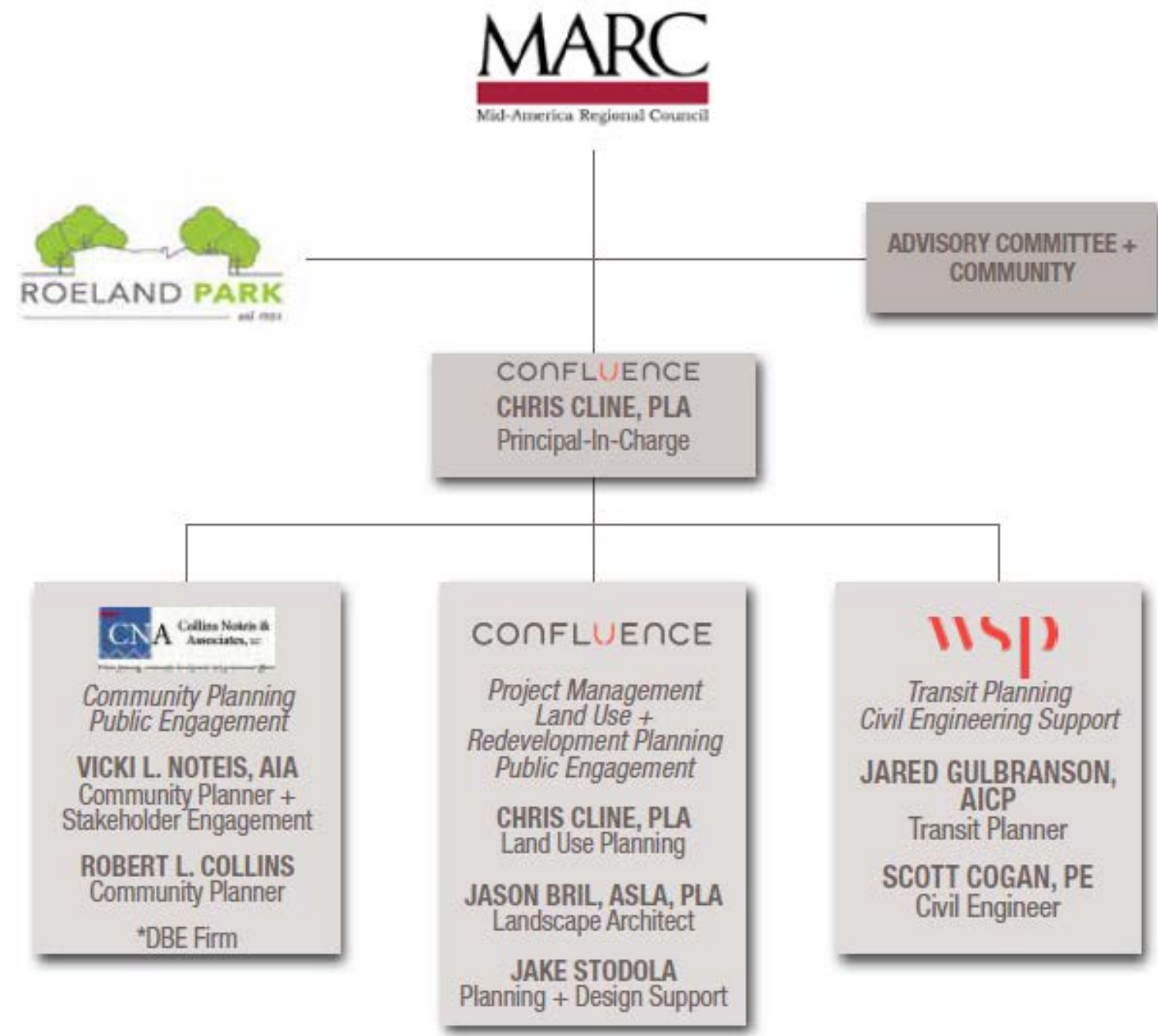
This project is supported through a grant from the Mid-America Regional Council's (MARC) Planning Sustainable Places Initiative - a regional program funded by the state-allocated Surface Transportation Program (Livable Communities Pilot) and intended to assist communities to explore transportation network improvements that enhance the quality of life and support long-term community growth.



Project Understanding:

- Strategic Opportunities
- Economic Development
- Community + Stakeholder Involvement
- Aligning Expectations
- Implement Recommendations

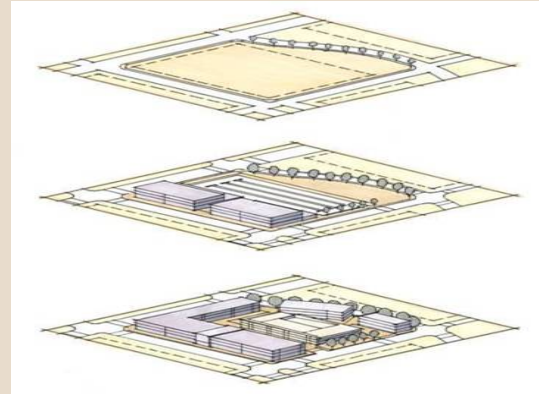
OUR TEAM



PROCESS

PLANNING APPROACH

- Phase 1: Visioning
 - Public = Stakeholder Involvement
- Phase 2: Discovery
 - Data Collection + Analysis
- Phase 3: Ideas
 - Workshops + Concept Alternatives
- Phase 4: Recommendations
 - Plan Review + Adoption (July 31, 2019)



PROCESS

ANTICIPATED OUTCOMES

- Future Land Use + Redevelopment Strategies
- Improved Multi-Modal Connectivity
- Achieve the Potential – A Community Supported Vision



TIMELINE

KEY MEETING: ● TASK PROGRESS: ■

| | FEB 2019 | MAR 2019 | APRIL 2019 | MAY 2019 | JUNE 2019 | JULY 2019 | Aug 2019 |
|---|-------------|-------------|---------------|-------------|--------------|--------------|-------------|
| Notice to Proceed | ● | | | | | | |
| Steering Committee Meeting #1 | | ● | | | | | |
| Develop Initial Concepts | | ■ | ■ | | | | |
| Steering Committee Meeting #2 | | | ● | | | | |
| Refine Concepts | | | ■ | ■ | ■ | ■ | ■ |
| Public Meeting #1 | | | ● | | | | |
| Steering Committee Meeting #3 | | | | ● | | | |
| Public Meeting #2 | | | | | ● | | |
| Steering Committee Meeting #4 | | | | | ● | | |
| Public Meeting #3 | | | | | | ● | |
| Final Plan Complete | | | | | | | ● |
| City Council Takes Action to Adopt Plan | | | | | | | ● |

STUDY OVERVIEW

- Building on previous plans
- Integrating with City's Comprehensive Plan
- Serve all modes of transportation
- Welcoming Corridor – Destination District



Roeland Park Comprehensive Plan



Roeland Park Parks Master Plan



Roe Boulevard Visioning Plan

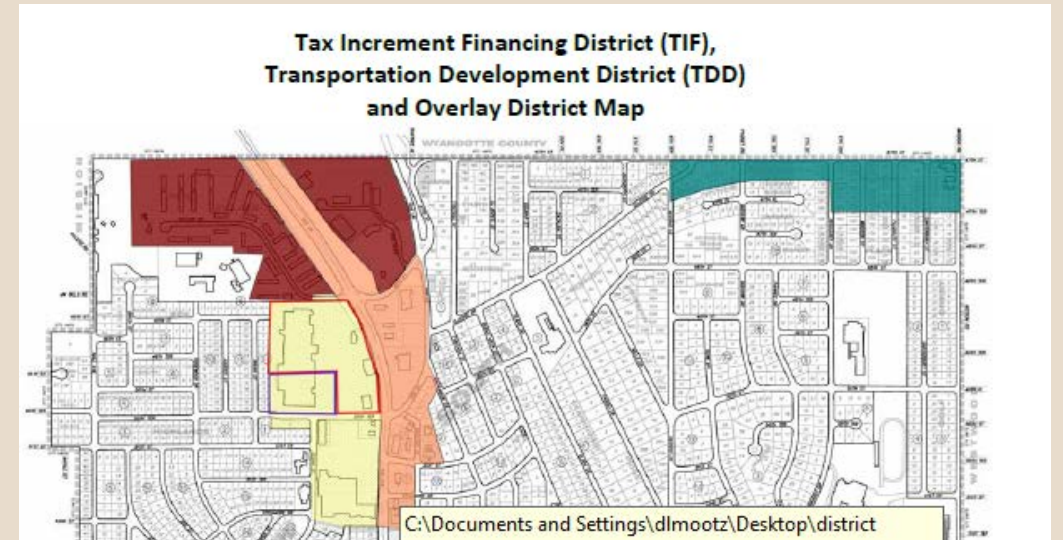


Mission Gateway

STUDY OVERVIEW

Roeland Park Comprehensive Plan 2012

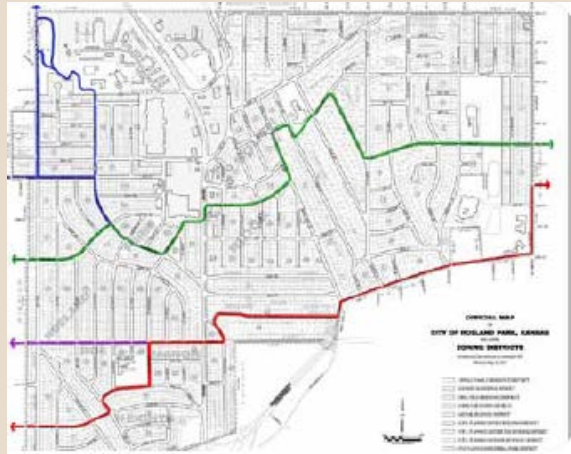
- Enhance the image, livability, and long term sustainability of Roeland Park
- Increase density, promote multi-use pedestrian oriented development
- Maximize revenue for the City
- Expand Town Center Area
- Improve traffic + pedestrian safety and efficiency
- Create “Sense of Place”
- Encourage additional green space and trail linkages connect neighborhoods and activity centers



STUDY OVERVIEW

Roeland Park Parks Master Plan 2010

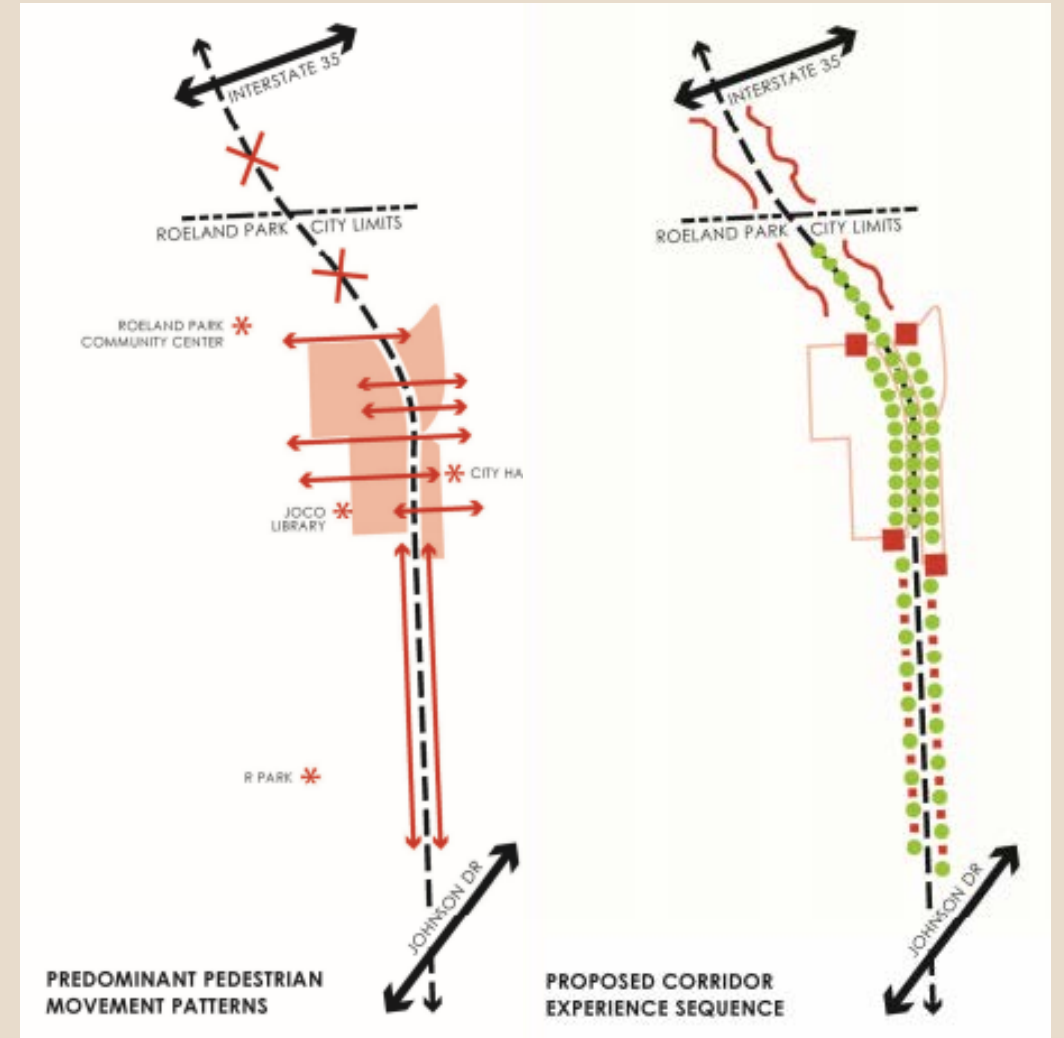
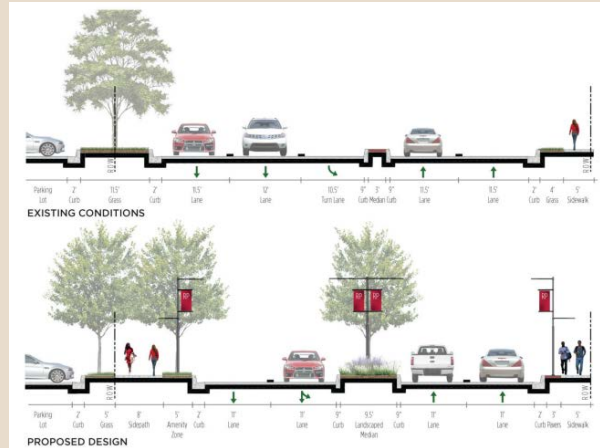
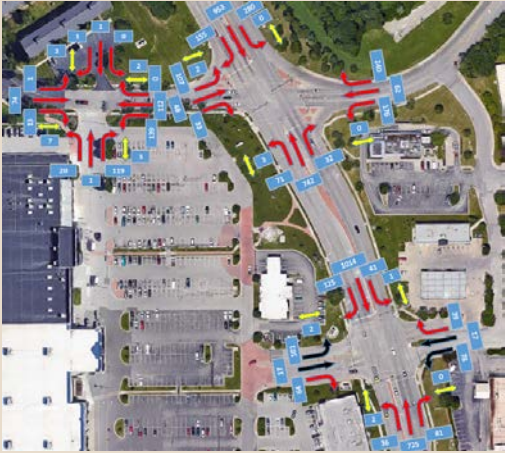
- Active, interesting and “green” community
- Improve connectivity between parks
- Invest in an environmentally sustainable future
- Create strong aesthetic and enhance unique identity
- Promote diversity in recreational opportunities



STUDY OVERVIEW

Roe Boulevard Visioning Plan 2020

- Improve pedestrian walkability and safety
- Maintain traffic capacity + improve efficiency
- Traffic calming to promote non-vehicular use of corridor
- Construct Multi-use Trail along Roe Blvd



STUDY OVERVIEW

Mission Gateway 2020

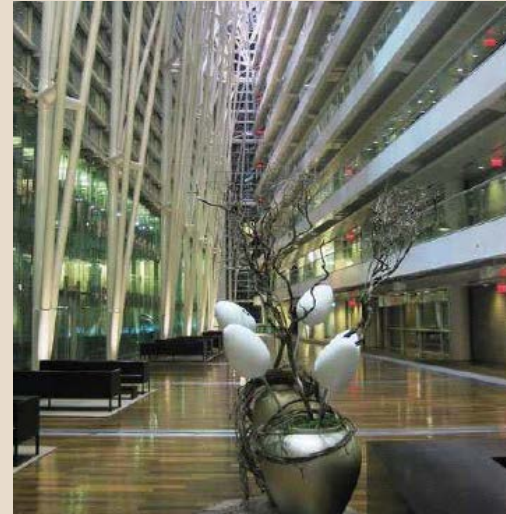
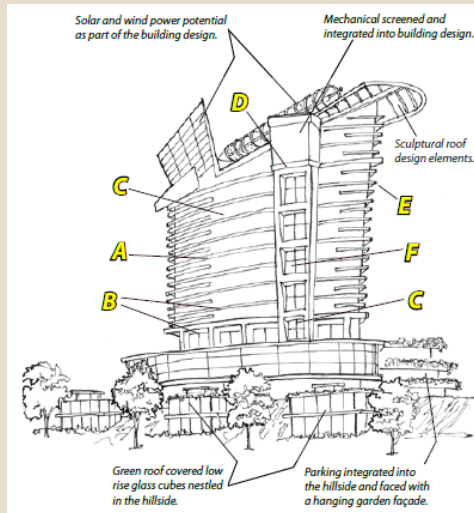
- Mixed use development: 4-story multi-family w/ first floor retail, two hotels, parking garage, food hall and destination entertainment venue



STUDY OVERVIEW

Roe Blvd + 48th Design Guidelines 2009

- Signature High rise mixed-use structure with residential, office, and retail
- Removal or realignment of Roe Pkwy and Roe Lane at W 48th St
- State-of-the-art sustainable building and site design practices
- Integrated public art and sculpture
- Incorporate parking into the structure



STUDY OVERVIEW

Roe Blvd + 48th Economic Analysis 2016

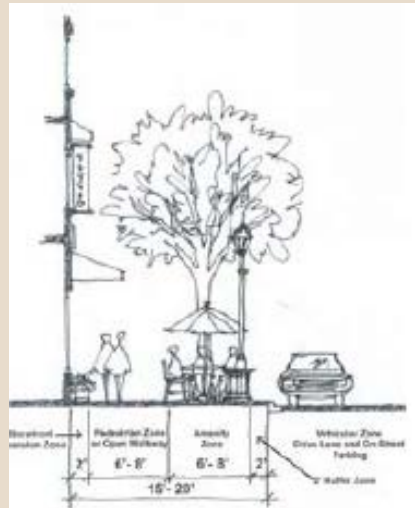
- Locally Sourced Eating & Drinking Establishments
- Extreme Sports Venue
- Complete infill pad site not feasible



STUDY OVERVIEW

Roe Blvd + Johnson Drive Design Guidelines 2009

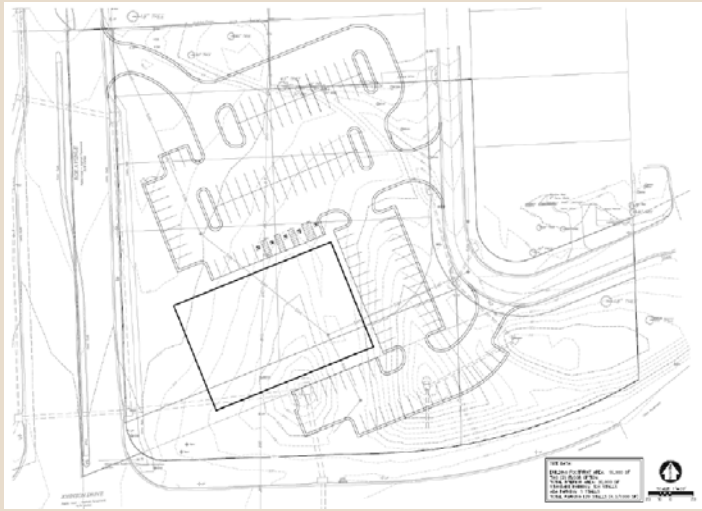
- Mixed-use pedestrian friendly development
- State-of-the-art sustainable building and site design practices
- Respect surrounding environment and neighborhoods
- Reinforce sense of urban enclosure by placing buildings close to street
- Enhance streetscapes for improved pedestrian + biking experience
- Traffic calming and intersection improvements



STUDY OVERVIEW

Roe Blvd + Johnson Drive Economic Analysis 2017

- Revenue generating, attractive gateway element
- 2-3 Story local retail, restaurant, office space
- Park or Public Space

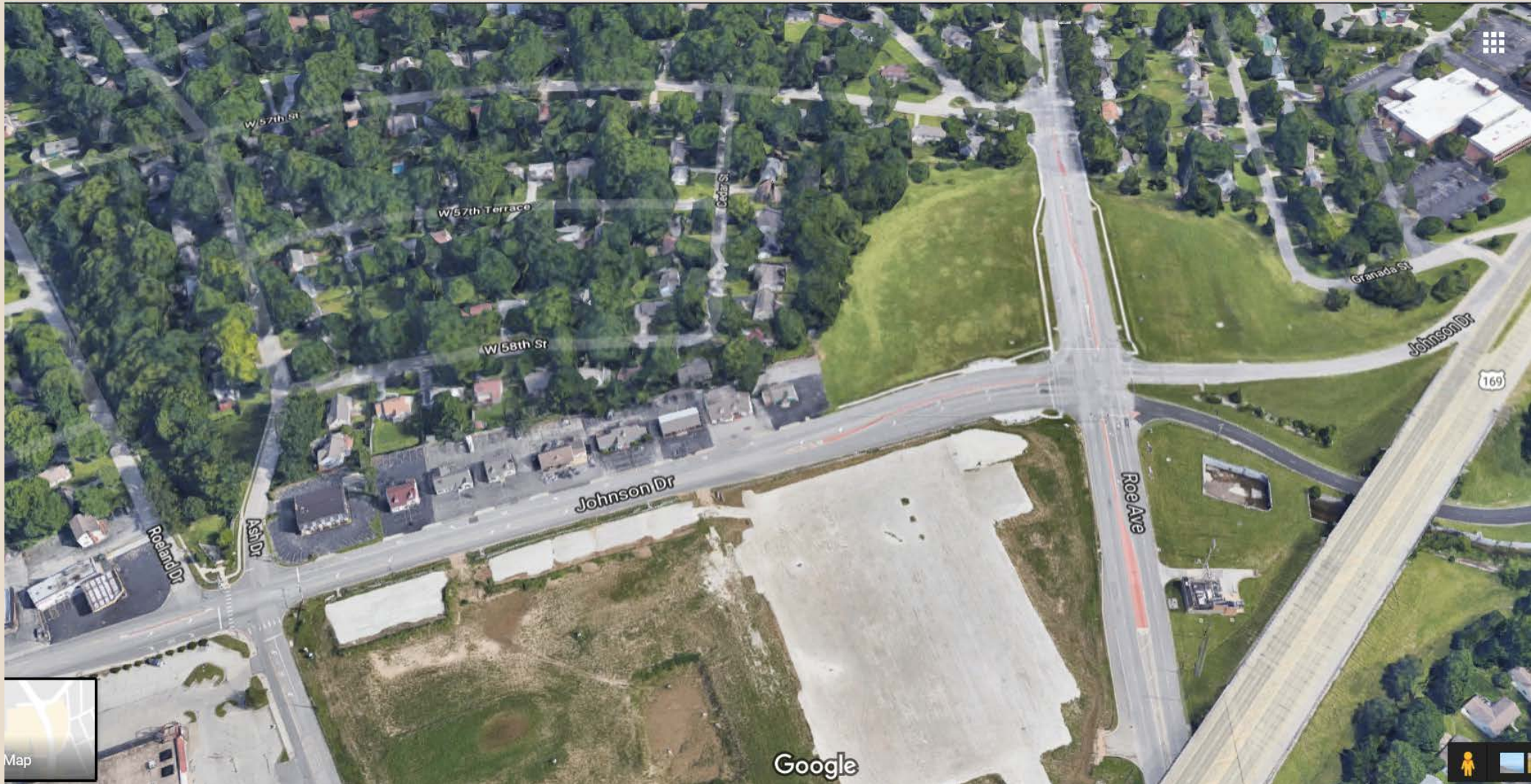


STUDY OVERVIEW



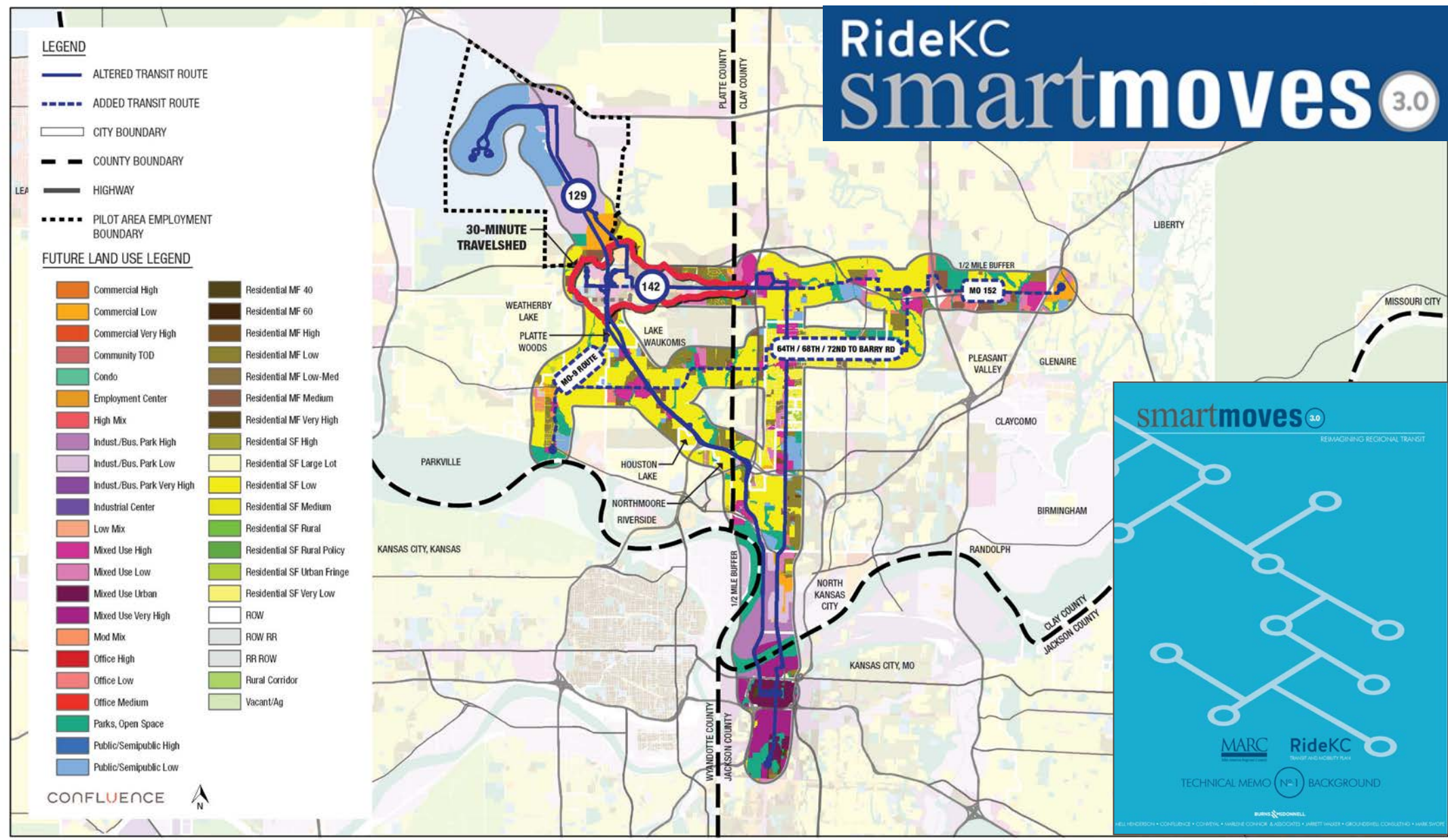


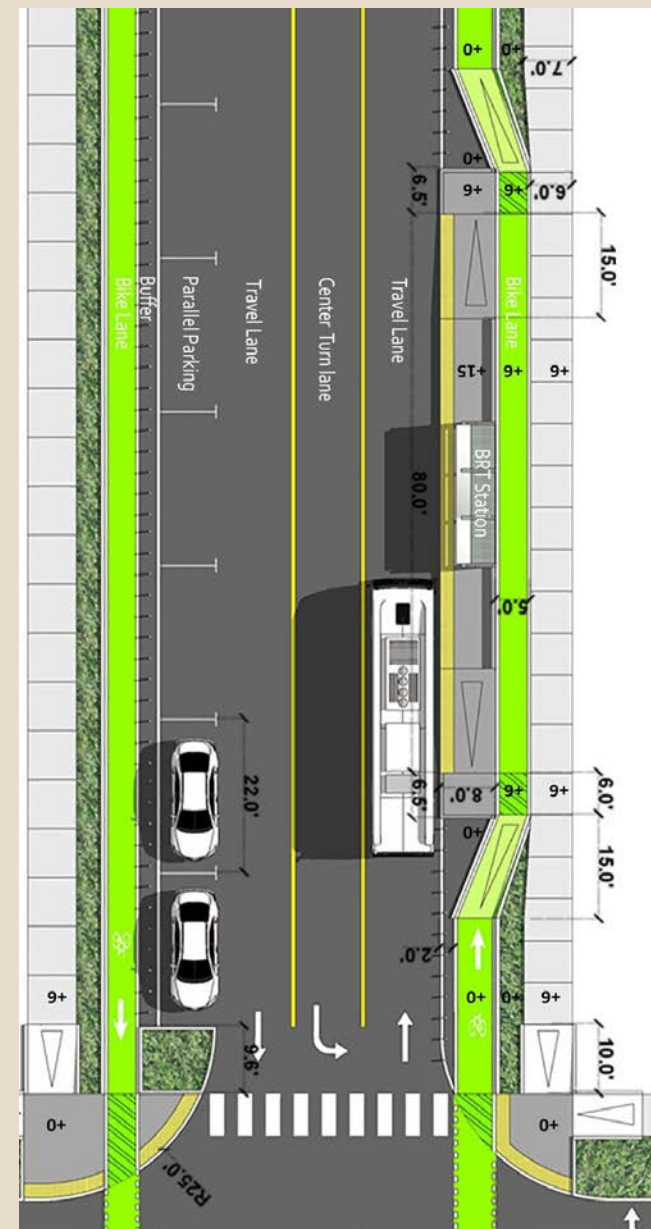
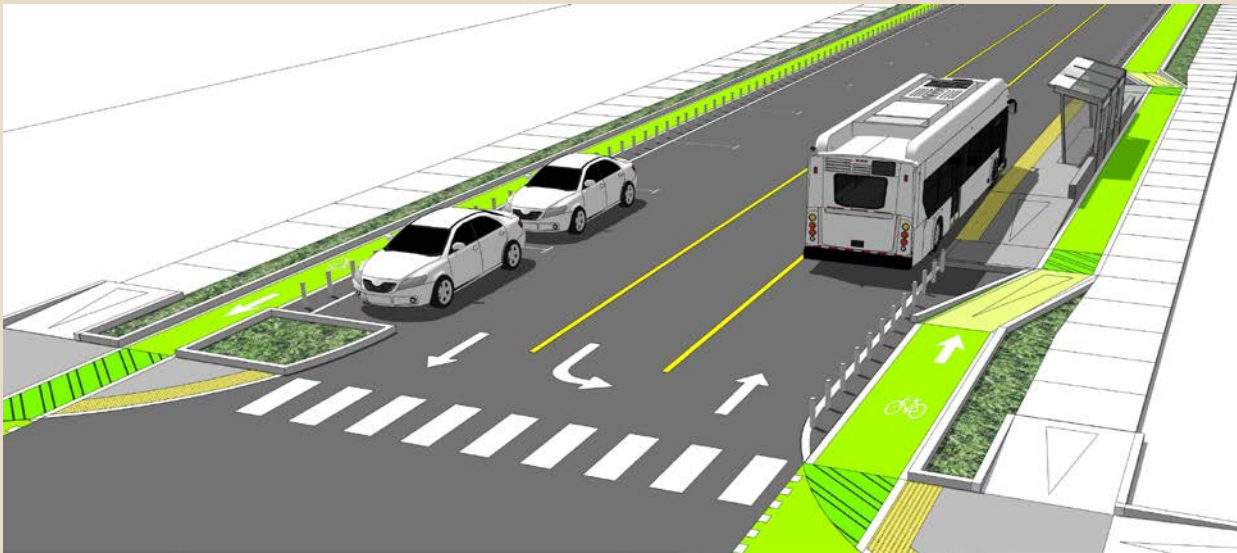
STUDY OVERVIEW



STUDY OVERVIEW







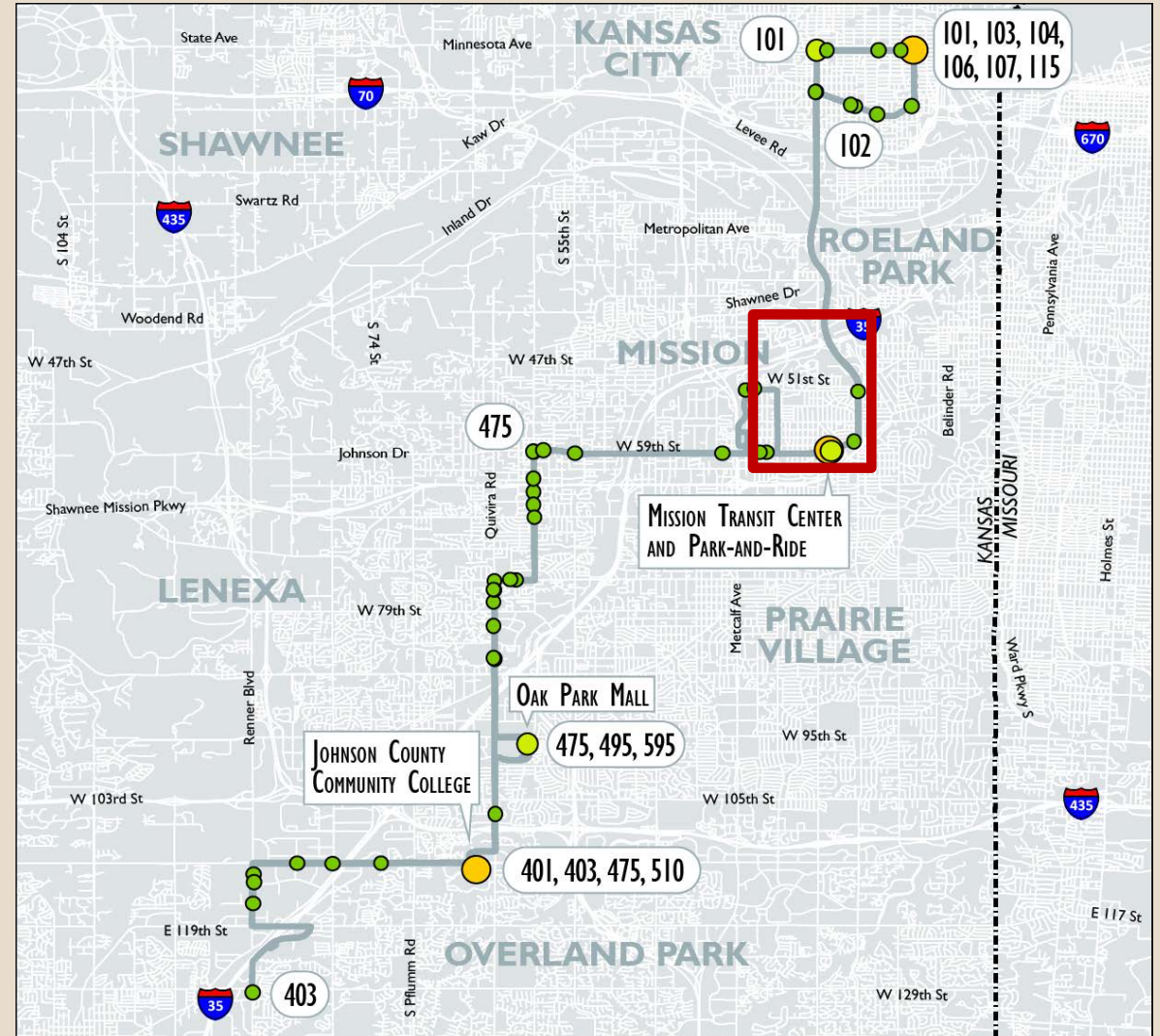
Transit Operations + Planning Integration

- **Currently working with KCATA to improve Johnson County Transit Routes**
- **Four RideKC routes serving the Roe Boulevard Corridor**
- **Opportunities for enhancement to passenger facilities in the study area**
- **Collaborate closely with KCATA throughout project**



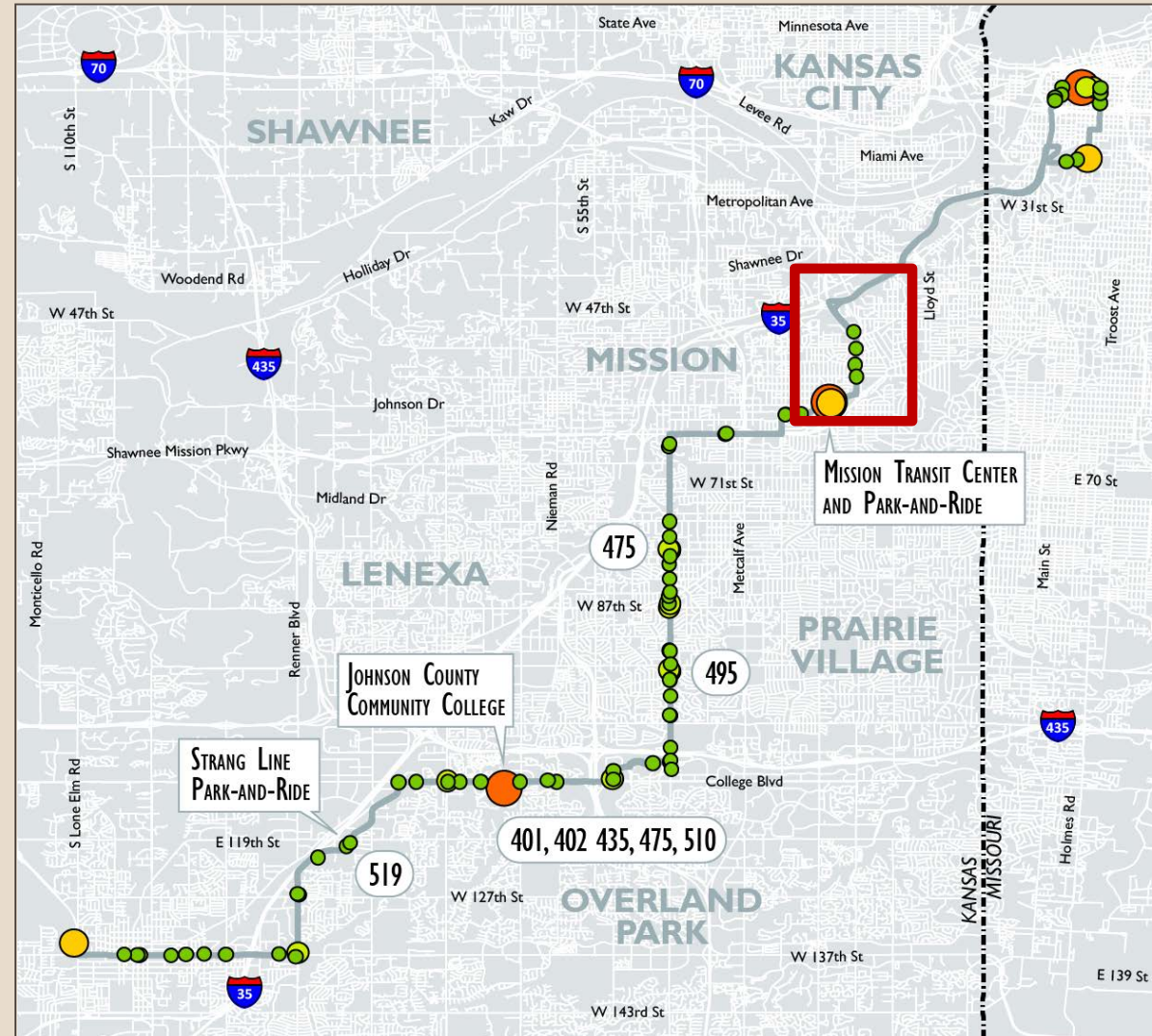
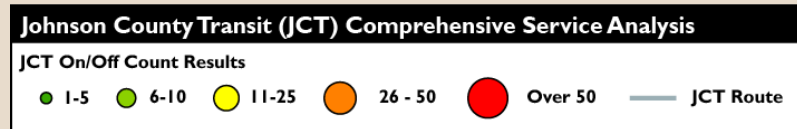
Route 402 – Johnson-Quivira

- Direct connection to KCK and major retail at Oak Park Mall
- Limited boarding activity today along Roe
- Connections to Mission Transit Center critical to JCT system



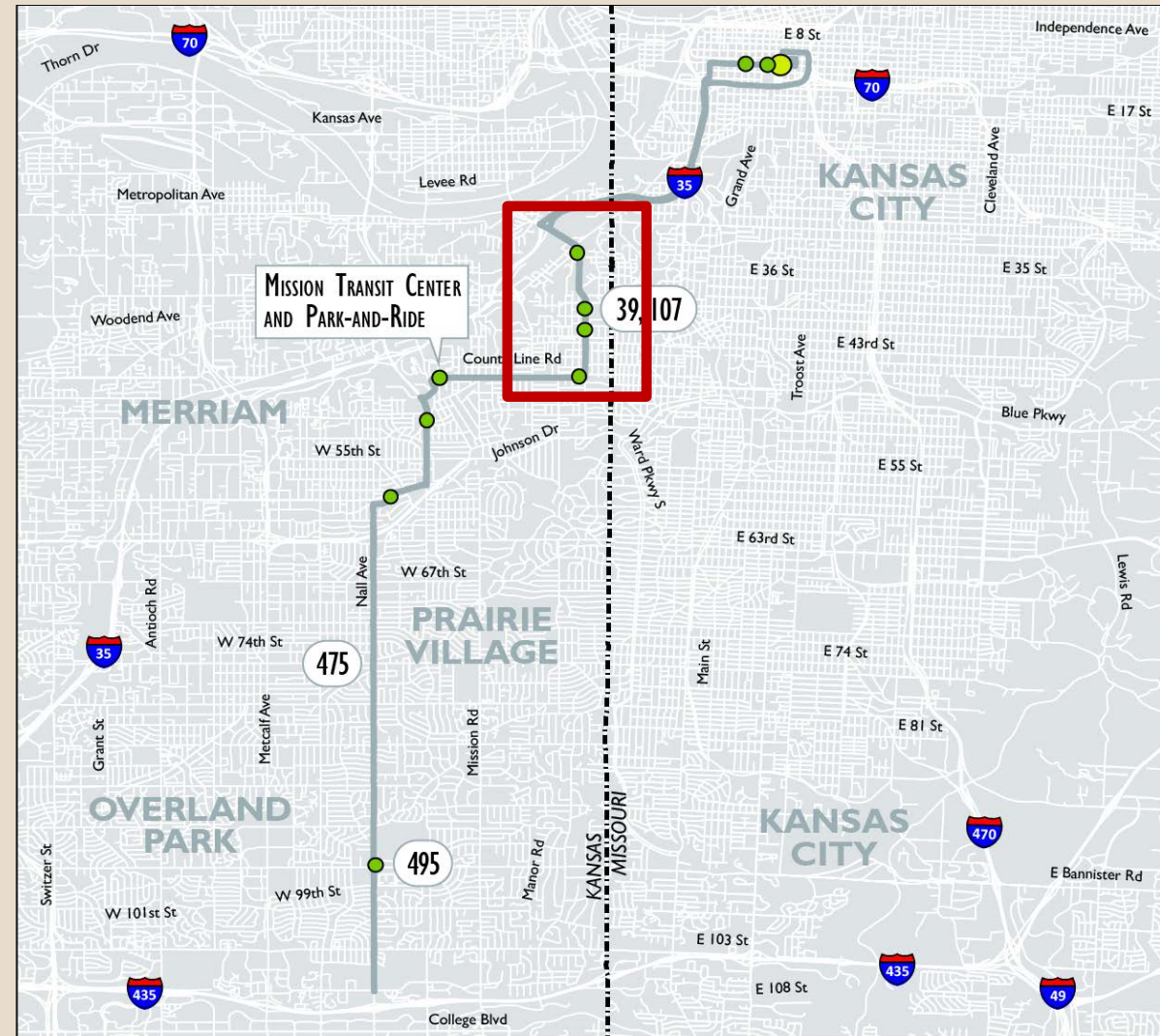
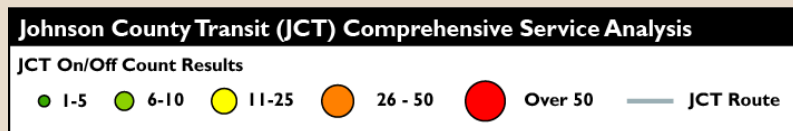
Route 403 – Antioch-Olathe

- **Connection to Downtown KCMO and the Antioch Corridor**
- **Multiple active boarding locations along Roe**



Route 405 – Nall - Downtown

- Connection to Downtown KCMO and KU Med
- Limited Service
- Recommended for discontinuation
- Route 107 to cover



Route 107 – 7th Street-Parallel

- Weekday service extended to Mission Transit Center
- Major connection to KU Med and KCK
- Not part of the JCT Transit Study



Passenger Facility Alternatives

- Seek opportunities to develop new **Mobility Hub** location
 - Park and Ride
 - Shelters
 - Information and Wayfinding
 - Bike / Ped enhancements
- Consider impacts to Transit operations and cost
- Adaptive approach to account for mobility market of the area



ADVISORY INPUT

Roe Blvd + 48th St / Skyline Dr

1. What are this areas biggest challenges?
2. What are this areas biggest opportunities?



ADVISORY INPUT

Roe Blvd + Johnson Dr

1. What are this areas biggest challenges?
2. What are this areas biggest opportunities?



ADVISORY INPUT

HEADLINE EXERCISE

The ribbon cutting is held for the new Roe
Blvd and 48th St / Skyline Dr improvements.

What is the headline in tomorrow's Kansas
City Star?



ADVISORY INPUT

HEADLINE EXERCISE

The ribbon cutting is held for the new Roe Blvd and Johnson Drive improvements.

What is the headline in tomorrow's Roeland Park Neighborhood Newsletter?



NEXT STEPS

UPCOMING MEETINGS

April 10 – Steering Committee #2

April 24 – Public Meeting #1

NEXT STEPS

HOMEWORK ASSIGNMENT

- What are some types of development that the city should consider?
- What are some types of development that would fit in well with the neighborhood?
- Please bring images of appropriate development types or examples (doesn't have to be in the Kansas City area) to Steering Committee Meeting #2

NEXT STEPS

KEY MEETING:  TASK PROGRESS: 

