



**LAMP
RYNEARSON**

hollis architects®
millers



R PARK

ROELAND PARK, KS

PHASE I & 2 CONSTRUCTION

NEIGHBORHOOD MEETING

APRIL 22, 2020

5:30 – 7:30 PM (VIRTUAL MEETING)

AGENDA

- **INTRODUCTIONS**
- **PROJECT SCOPE AND SCHEDULE**
- **CONSTRUCTION HOURS AND PARK ACCESS**
- **COMMUNICATIONS**
- **QUESTIONS**

CONSTRUCTION PHASE SERVICES TEAM



LAMP
RYNEARSON

hollis architects®
miller



DONNIE SCHARFF
PUBLIC WORKS DIRECTOR
ROELAND PARK



DAN MCGHEE
PROJECT MANAGER
LAMP RYNEARSON



ADAM RICHARDSON
PROJECT MANAGER
MEGAKC



GREG VAN PATTEN
SR PROJECT ENGINEER/
CONSTRUCTION OBSERVER
LAMP RYNEARSON



KENNY JONES
CONSTRUCTION OBSERVER
LAMP RYNEARSON



RANDY GREENE
SITE SUPERINTENDENT
MEGAKC

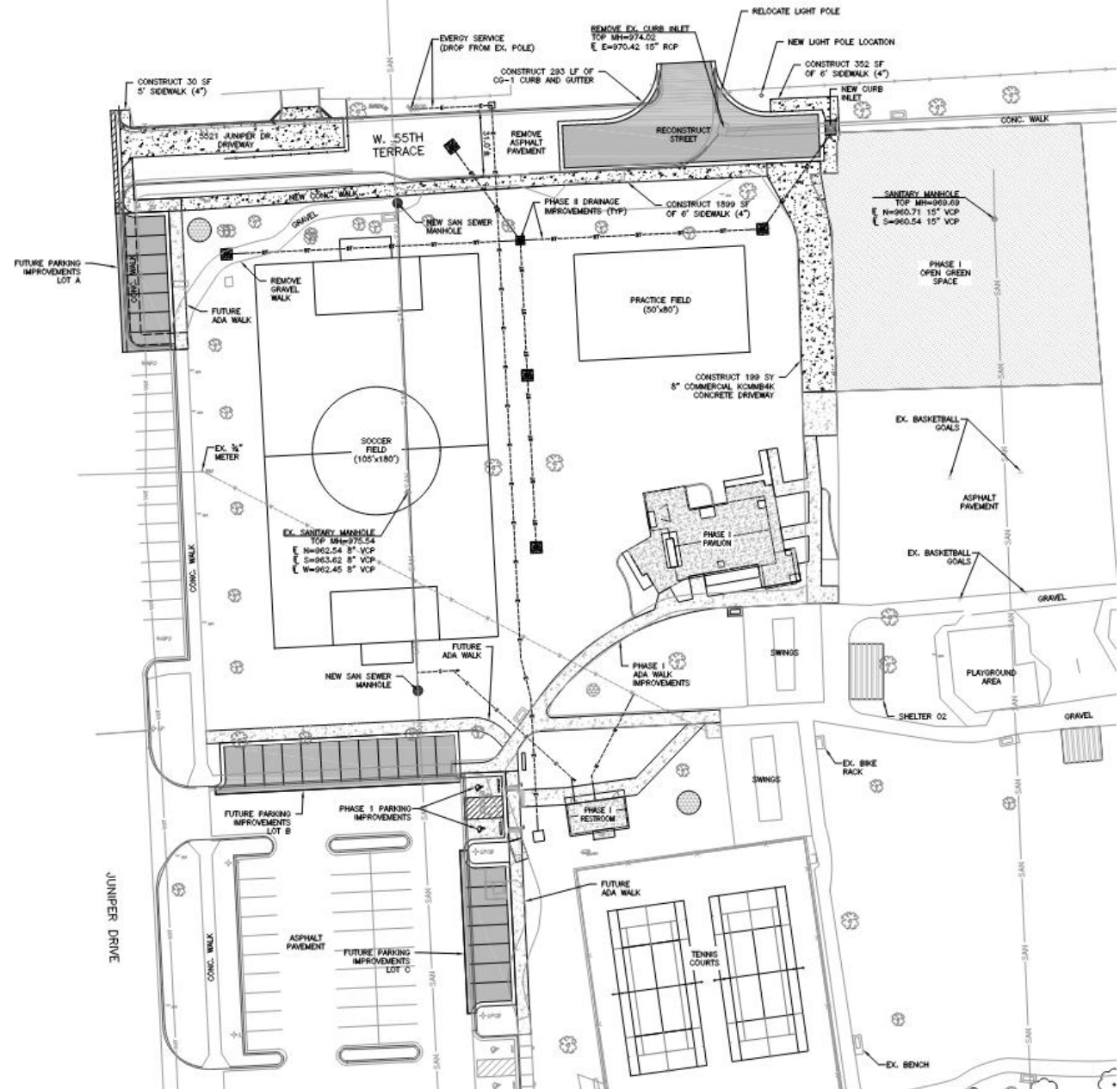
PHASE I

- Pavilion, restrooms, and associated accessible parking
- Removal of asphalt play area to add green space
- Site utilities to support pavilion and restrooms



PHASE 2

- Soccer field, removal of W 55th Terrace, Briar Street hammerhead, and sanitary sewer main removal and relocation
- Some grading for potential future parking spaces

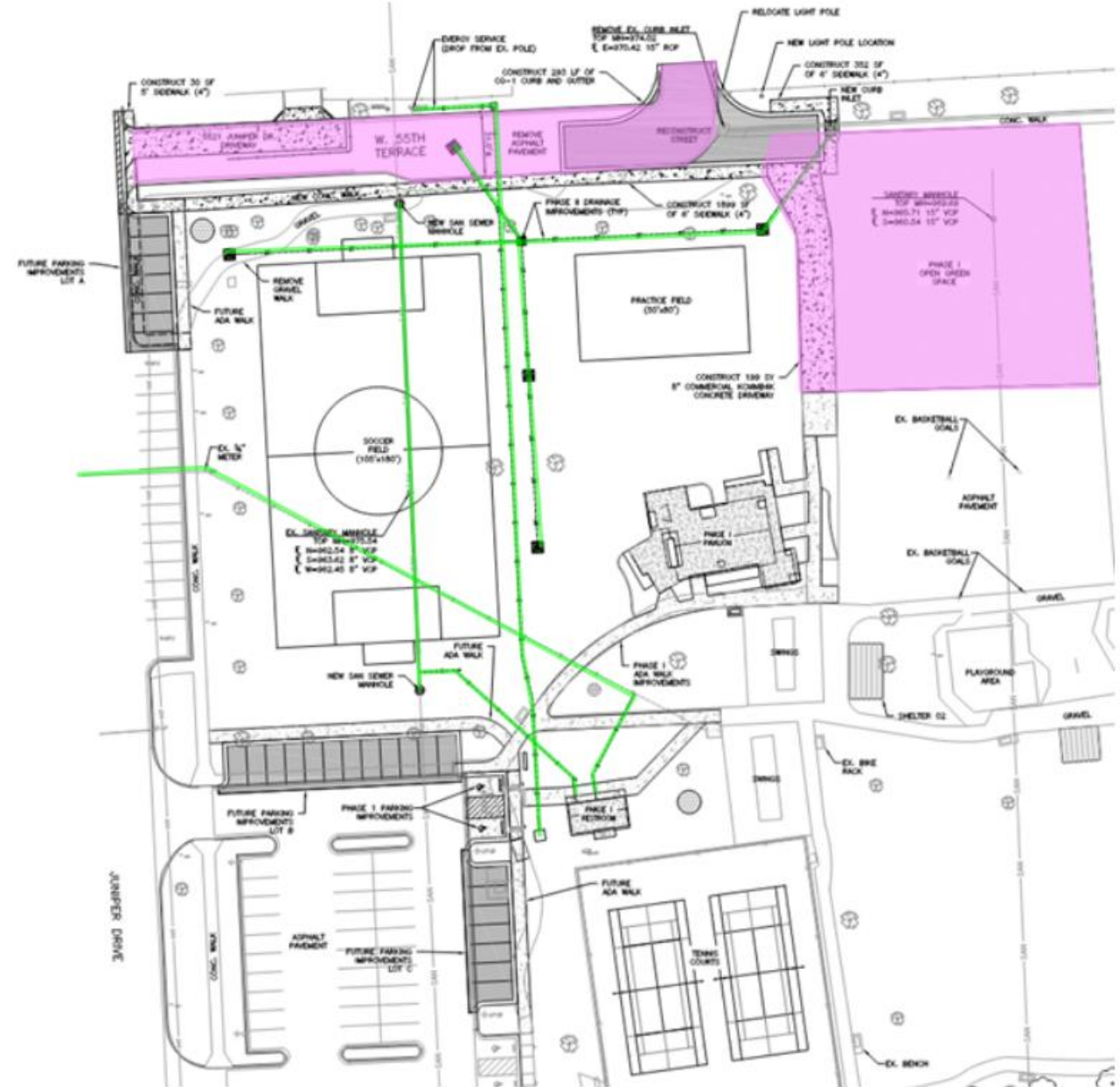


CONSTRUCTION SCHEDULE - MAY

■ SITE UTILITIES (GREEN)

- SANITARY SEWER
- ELECTRIC
- WATER
- STORM SEWER

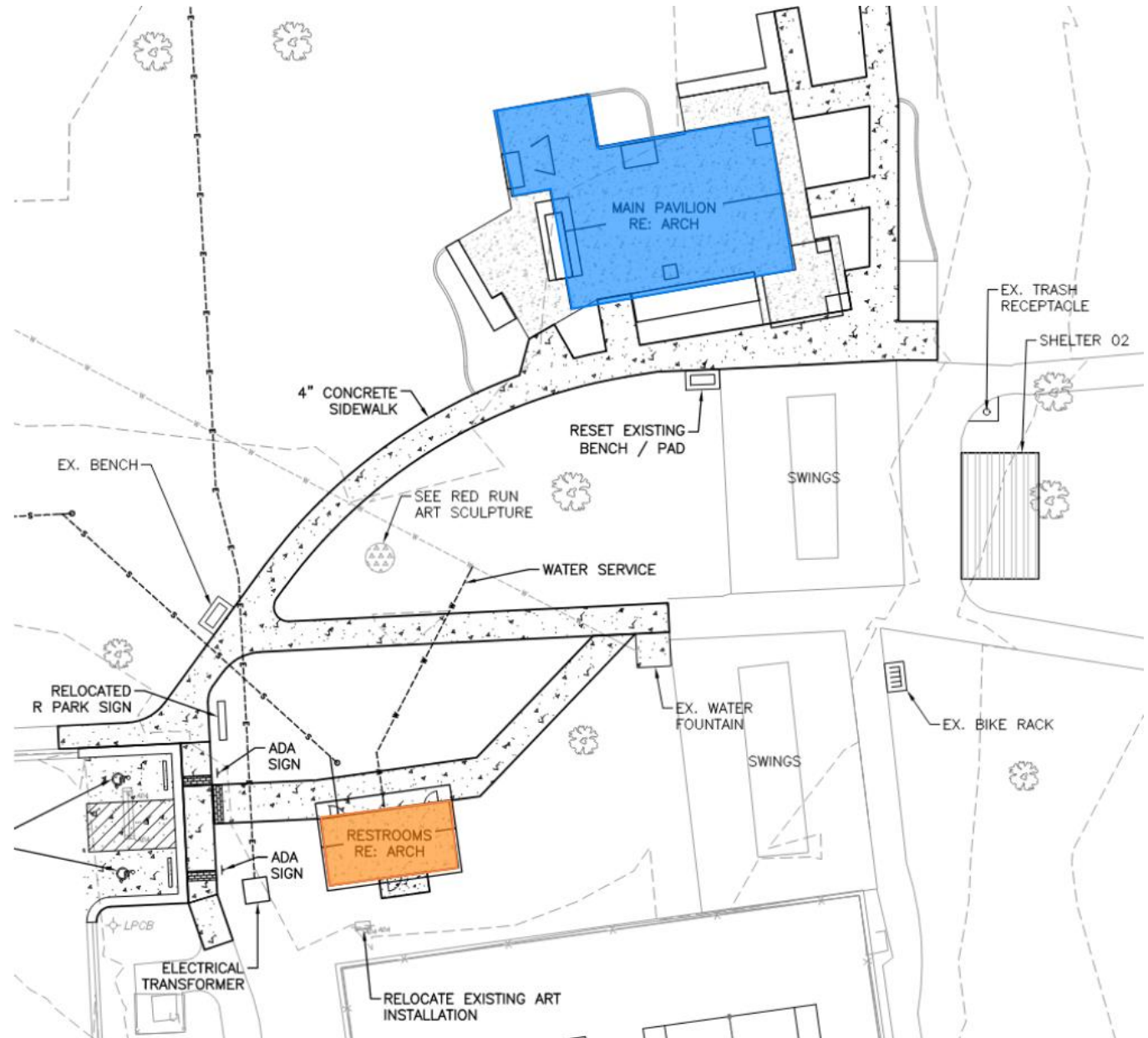
■ ASPHALT PAVEMENT REMOVAL (PINK)



CONSTRUCTION SCHEDULE – JUNE / JULY

- PAVILLION (BLUE)

- RESTROOMS (ORANGE)



GRETCHEN AND ARDIE DAVIS COMMUNITY PAVILION RENDERINGS





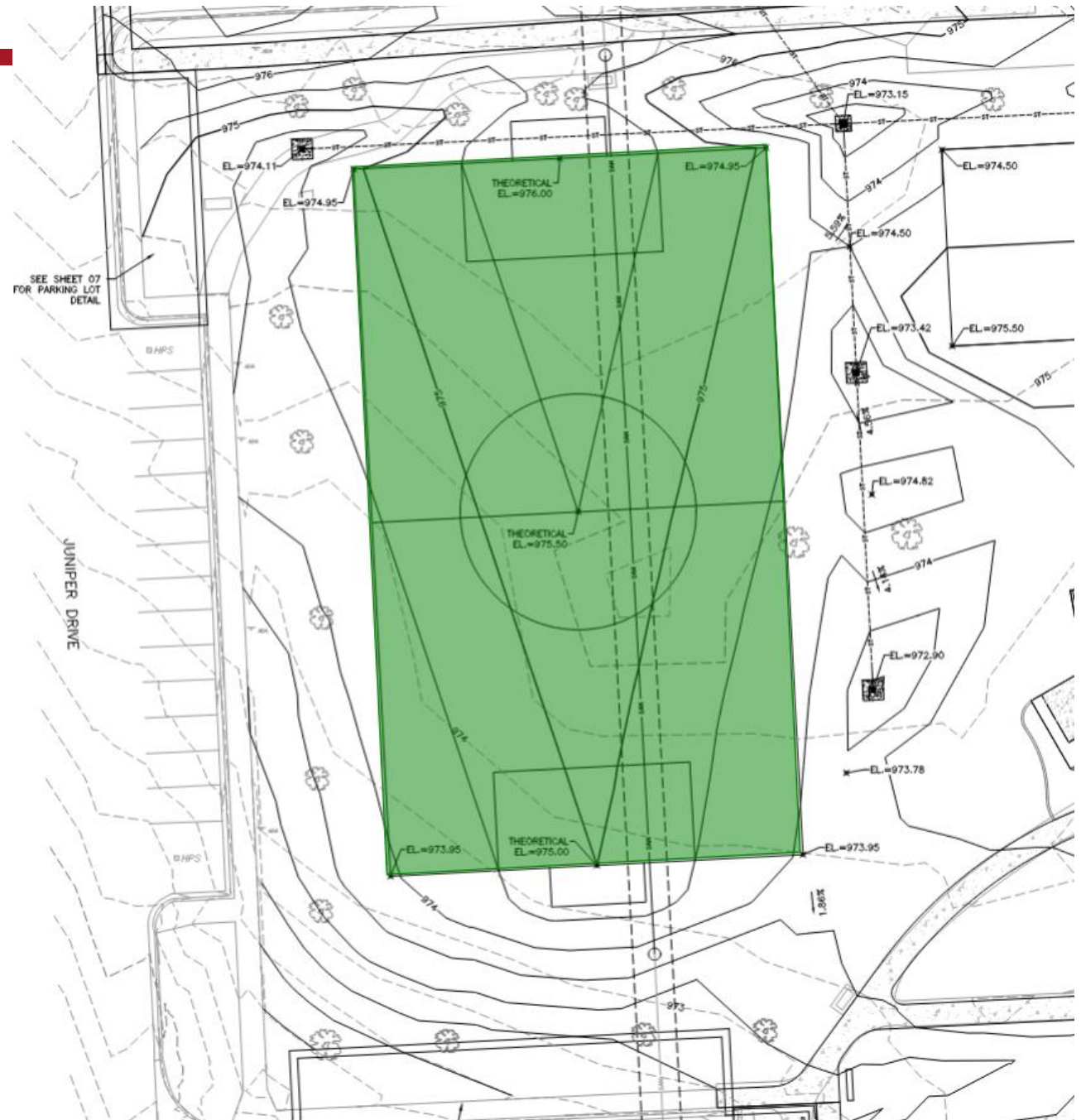
GRETCHEN AND ARDIE DAVIS COMMUNITY PAVILION RENDERINGS

RESTROOM RENDERING



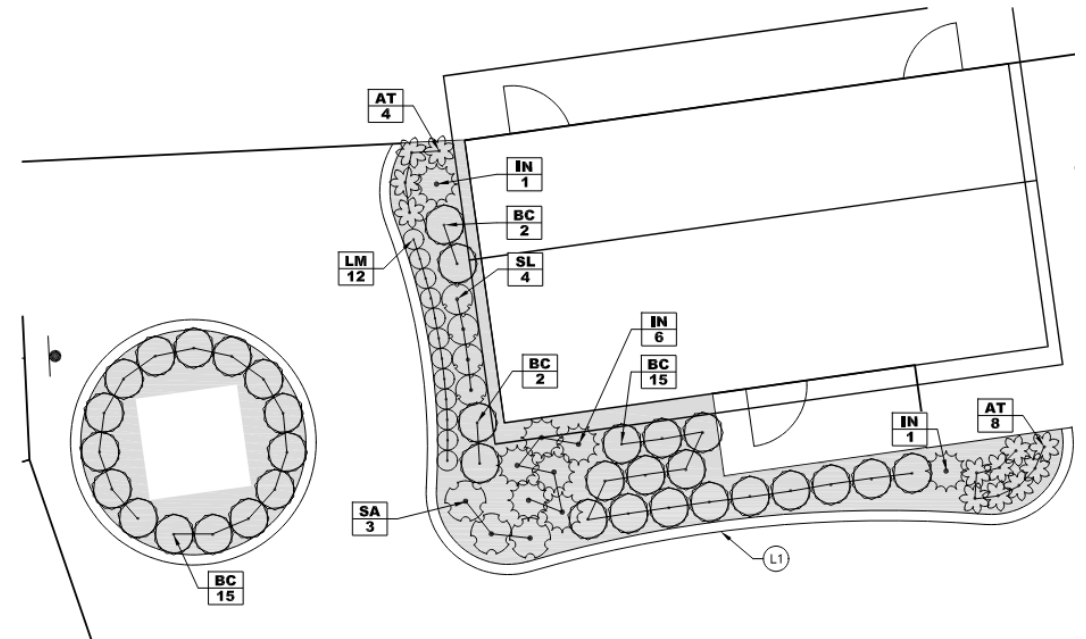
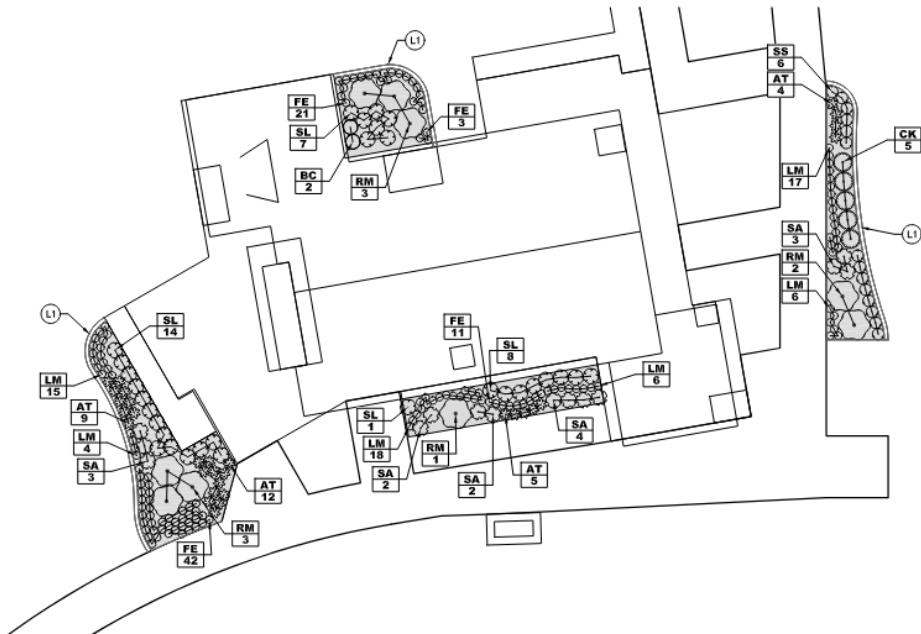
CONSTRUCTION SCHEDULE – AUGUST

- SOCCER FIELD
(35 x 60 YARDS)
 - TOPSOIL IMPORT
 - FINISH GRADING



CONSTRUCTION SCHEDULE – SEPTEMBER / OCTOBER

- SEEDING, SODDING AND LANDSCAPING
- SITE RESTORATION

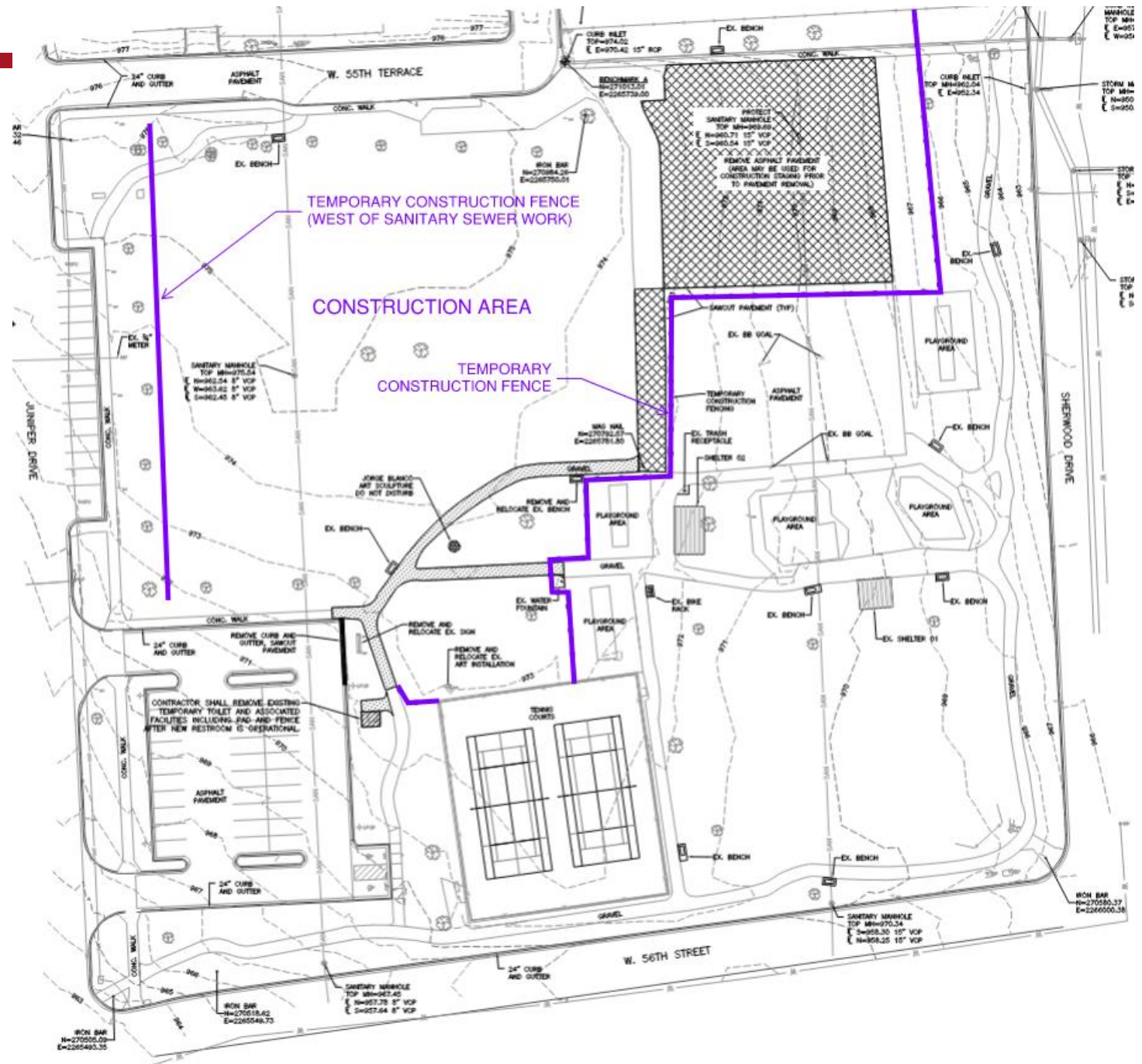


WORKING HOURS AND PARK ACCESS

■ CONSTRUCTION HOURS:

- 7:00 A.M. TO 5:30 P.M.
MONDAY – FRIDAY
- AFTER HOURS AND
WEEKENDS WHEN
REQUIRED (MUST BE
APPROVED BY CITY OR
CITY ENGINEER)

■ PUBLIC PARK ACCESS LIMITED TO SOUTHEAST CORNER (56TH and SHERWOOD)



COMMUNICATION PLAN



- ☐ Roeland Park City Website – Monthly Updates
- ☐ Social Media – Weekly Updates as Needed
- ☐ Newsletter Updates

Any resident questions or concerns during construction need to be directed to the onsite Construction Observer or City representative.

Construction Observer: Greg Van Patten, (636) 484-2595

City Hall: (913) 722-2600 Donnie Scharff Public Works
Director: (913) 722-5435 Email – dscharff@roelandpark.org

QUESTIONS AND ANSWERS

