

October/November 2023

# THE ROELAND PARKER

Official Newsletter of the City of Roeland Park

## Leaf Collection Season



Leaf collection starts Oct. 30th! See page 4 for a dates by area. Visit <https://www.roelandpark.org/328/Fall-Leaf-Pickup-Program> for 'how to's' for a successful season.

## Stormwater Utility Assessments in 2024

Starting in 2024, residents and businesses will begin to see a storm water utility fee with a reduction in the city's property tax mill rate. These funds will be used specifically to maintain our storm water infrastructure which includes curb and gutter, storm inlets, in-ground piping, detention basins and open drainage channels.

In 2024, households not already subject to a stormwater improvement assessment will be charged \$57.75/year, which will be included on your annual property tax bill. Businesses and nonprofits will be charged a fee based on their

impervious surface area. At the same time the City's property tax mill rate will decrease an equivalent amount in 2024, with a planned decrease in 2025 - 2027 as the stormwater assessment is fully implemented. Those already in a stormwater improvement district will not be subject to the utility fee until their current assessment expires.

This change adds transparency to the City's budgeting process. For more details, visit <https://www.roelandpark.org/367/Stormwater-Management-Plan>.

## This issue:

Letter from the Mayor

Page 2

City Event Calendar &  
Employment Opportunities

Page 2

RPCC News

Page 3

Leaf Collection Map &  
Schedule

Page 4

Capital Projects Update

Page 5

All About Light Pollution

Page 6

Active Transportation Events

Page 6

RP History & Public Safety  
Day

Page 7

RPCC Grand Re-Opening &  
Trunk or Treat

Page 8



## Fall City Events & Holidays

**Walk to School Day** - Tues.  
October 4th, 7:30a - 8a. Start at  
City Hall and walk to Roesland  
Elementary. Families welcome!

**Safety Day** - Sat. October 7th,  
11a - 1:30p, City Hall Parking Lot

**Indigenous Peoples' Day** -  
Mon. October 9th, *City Offices  
Closed*

**Community Center Grand  
Opening & Trunk or Treat** - Sat.  
October 21st, 10a, RPCC

**National Prescription Drug  
Takeback Day** - Sat. October  
28th, 10a - 2p, Pricechopper in  
Roeland Park

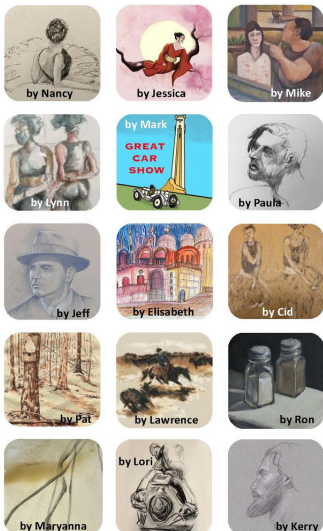
**Community Forum w/ Everyg** -  
Mon. October 30th, 6p, RPCC

**Veteran's Day Observed** - Fri.  
November 10, *City Offices  
Closed*

**Thanksgiving Holiday** - Thurs &  
Fri November 23rd and 24th,  
*City Offices Closed*

## George R. Schlegel Gallery News

Don't forget - the Buena Vista Art  
Studio Figure Drawing group will be  
displaying their work at the Schlegel  
Gallery through Nov 3rd!



## Letter from the Mayor

Hey, RP –

I wanted to take a moment to express how incredibly proud I am of our community for its outstanding civic engagement. Your active involvement in our community is nothing short of inspiring – from attending local meetings to getting involved in community initiatives, you're making a real difference. Civic engagement is the “secret sauce” that makes our community so vibrant and welcoming. It's heartwarming to witness neighbors coming together to create positive change.

But it's not just about attending meetings or volunteering time; it's about the connections we're building and the friendships we're forging. It's about making our voices heard and creating a better future for ourselves and future generations of Roeland Parkers. And, one of the most powerful ways to ensure a better future is by exercising our right to vote!

Did you know: Kansas has elections every year? This year we are electing leaders to our local governing bodies. On the ballot in Roeland Park will be candidates for City Council/Mayor, Shawnee Mission School Board, JCCC Board of Trustees and the WaterOne Board.

October/November 2023



Make your plan to vote then check out <https://www.jocoelection.org> for election information including voter registration and advanced ballot applications, voting locations, and a copy of your sample ballot.

I am incredibly proud of our community for its record of outstanding civic engagement. Let's keep it up by casting our votes on or before November 7!

All the best,

Mayor Michael Poppa

## We're Hiring!

The City of Roeland Park has some exciting career opportunities available. We're hiring for a **Building Inspector/Official** and several **Police Officer** positions.

The Building Inspector pay range is between \$31.12 - \$49.95/hour DOQ. Employees enjoy a comprehensive benefits package including KPERS pension, health, dental, vision, life and short-term disability insurance, sick and vacation leave, and ten paid holidays/year. Knowledge of the construction industry is essential and experience as a building inspector is preferred.

The Police Officer pay range is between \$25.72 - \$38.58/hr. and in addition to the benefits listed above, Officers get KP&F retirement, 10 hour shifts, all uniforms and equipment provided, as well as promotional opportunities. RPPD has new state of the art equipment and exceptional community support.

A sign on bonus of up to \$3,000 is available for new hires. Visit [www.roelandpark.org](http://www.roelandpark.org) for more information and to apply. Contact Kelley Nielsen for more details, [knielsen@roelandpark.org](mailto:knielsen@roelandpark.org)







# ROELAND PARK RECREATION CAMPUS

## New! Preschool & Youth Programs

### Mixed Martial Arts (Ages 6-12)

Oct. 2 - Oct. 18, Mon & Wed 5 p.m.

Traditional Martial art techniques taught with an emphasis on awareness based self-defense and anti-bullying. Improve discipline, focus and self-confidence while strengthening the body and mind.

### Amazing Athletes (Ages 3-5)

Oct. 6 - Nov 3, 9 a.m., five, 45-min. sessions

Amazing Athletes uses a multi-sport program to introduce the fundamentals of ten different sports in a non-competitive environment. This program focuses on children gaining confidence, combining fitness with fun, and developing key motor skills.

### Creepy Critters (Age 1-4 with Adult)

Oct. 10, 10:30 a.m., \$8/\$9

nonresidents

"Who! Who, goes there?" You don't have to be afraid of anything when you understand the importance of all animals including the creepy ones! Join the Ernie Miller Nature Center to see a live tarantula, toad, and owl.



### "S" is for Snake (Age 1-4 with Adult)

Nov. 14, 10:30 a.m., \$8/\$9 nonresident

See live snakes from the Ernie Miller Nature Center. Uncover the mysteries of these legless wonders and learn how they help people.

**Front Desk:** (913) 826-3160

**Program Registration:**

(913) 831-3359

**Sports Dome:** (913) 362-8700

Please call for open gym and court rental availability.

**Community Center Office and Fitness Room Hours**

Monday - Thursday: 7a - 8p

Friday: 7a - 5p

Saturday 8a - 1p

Sunday: CLOSED

## Grand Re-Opening & Trunk-or-Treat

**Oct. 21, 10 a.m. - noon**

Join Johnson County Parks & Rec & the City of Roeland Park for a Grand Re-Opening and Trunk-or-Treat. Your family can see the new RP Community Center & Sports Dome while getting an early dose of treats! Learn about programming, resources and facility rental while you tour the new space. More info on pg 8.



[WWW.FACEBOOK.COM/ROELANDPARKCOMMUNITYCENTER](http://WWW.FACEBOOK.COM/ROELANDPARKCOMMUNITYCENTER)

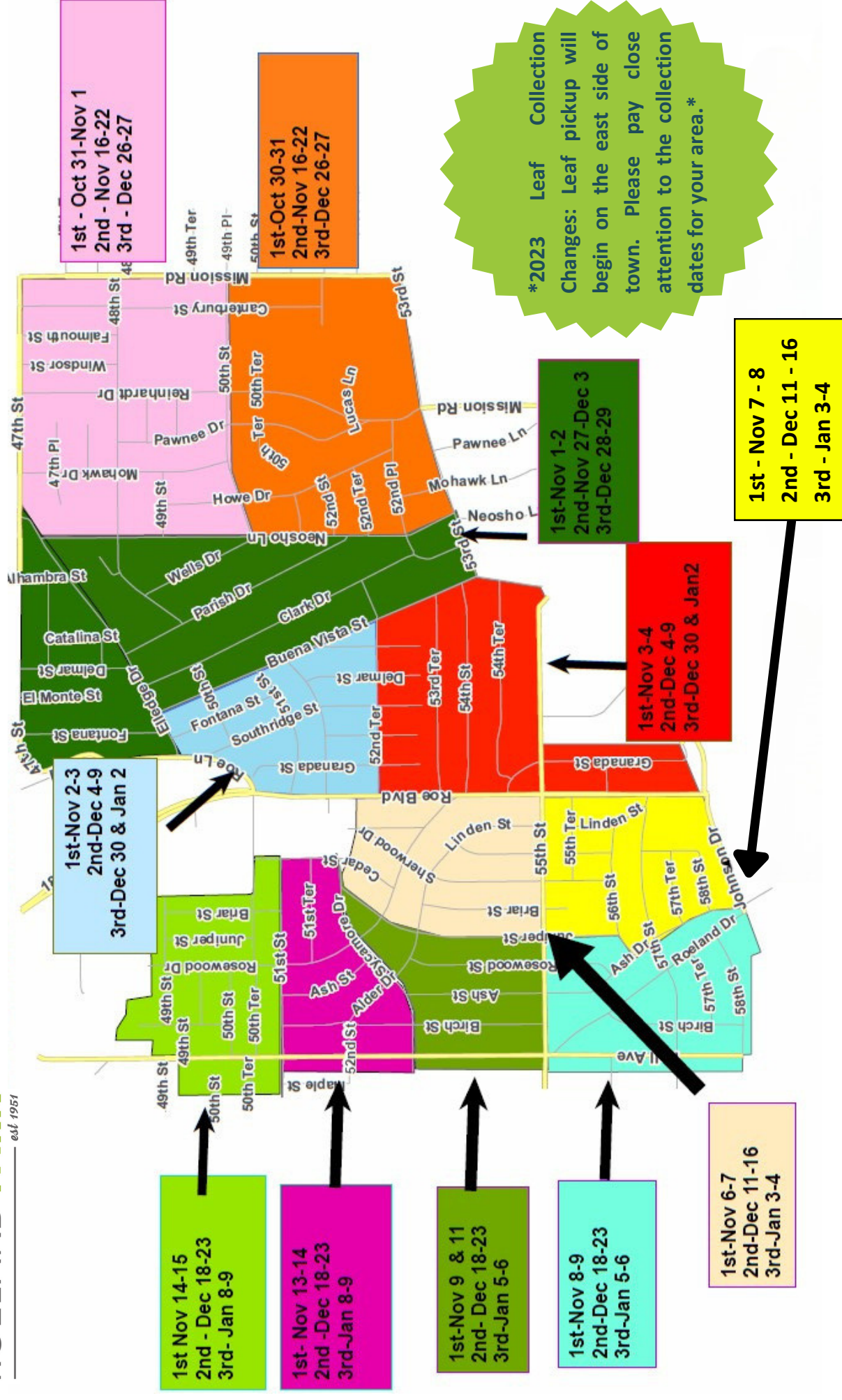
[WWW.JCPRD.COM](http://WWW.JCPRD.COM)

## 50 Plus Program Weekly Schedule -

Starting Oct. 2, all programs will be held at the Roeland Park Community Center. For more information and to register: CALL (913) 826-3160. \*Registration Required

Monday	Tuesday	Wednesday	Thursday	Friday
HATHA YOGA 4 p.m.	KNITTING GROUP 1 p.m.	TAI CHI* 10 a.m.	MAH JONGG 12 p.m. HATHA YOGA 4 p.m. TAI CHI * 5 p.m.	HOBBY GROUP 1 p.m.







## WORK IN PROGRESS - CAPITAL PROJECT UPDATES



Roeland Park has had a busy construction season this summer! Several capital projects are now complete or still underway with an expected completion date this fall. Below are some of the improvements we are excited to share!

**Canterbury Street Reconstruction.** Canterbury between 47th and 51st Street was the City's 2023 Residential Street Reconstruction project and was completed in August. The project includes a new street base and surface, stormwater improvements, curb repair and replacement, and spot sidewalk replacement. The city also completed missing sidewalk segments on the westside. Lawn and landscaping restoration marked the final piece of the project.

**Roeland Park Community Center - Phase 1.** The Roeland Park Community Center is undergoing a major interior renovation, as well as an exterior facelift! In addition to new paint, the interior space will have new flooring, doors, lighting improvements, renovated restrooms, and a new patio installed outside of Room 6.

**City Hall Exterior Improvements.** Speaking of facelift, Roeland Park City Hall has a new look! You'll notice our new modern black and white appearance which matches the renovated community Center!

**The Rocks Development @ Roe Blvd and 48th Street.** The City finalized the sale of the property known as *The Rocks* at 48th and Roe at the end of August 2023. Work has already begun to relocate an electric duct bank and adding fill material to make way for the new mixed use facility with 285 class A apartments and space for a sit-down restaurant. The new development by EPC is expected to be complete at the end of 2025.

**New Public Works Facility.** Due to the Rocks development, Public Works needed to find a new home, which will be located at 1800 Merriam Lane in Kansas City, KS. Work is underway to renovate the existing 28,000 square foot building for the needs of the City. The facility is expected to be complete by the end of 2023.

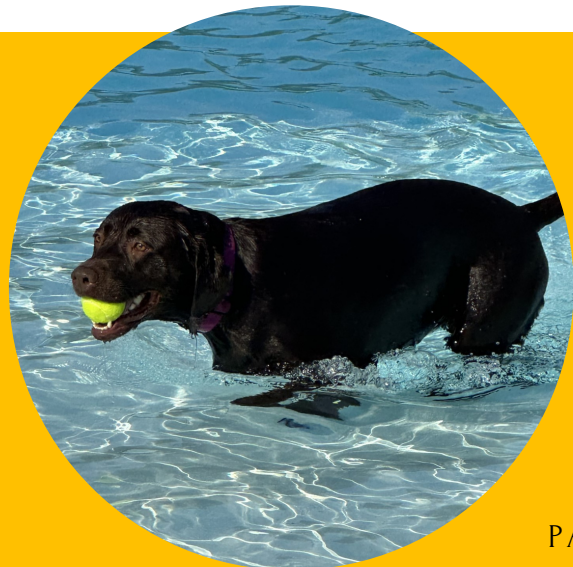
**Women's Locker Room Improvement, Aquatics Center.** Prior to the start of the summer pool season, the women's locker room received an upgrade. The project replaced lockers, improved showers, installed new dividers for the toilets, replaced countertops, repainted the walls, and resurfaced the floor.



**53rd Street Mission to Chadwick.** This project, completed in conjunction with Fairway, included a mill and overlay along with replacing sections of sidewalk and curb.

## Pool Pawty Success!

The 3rd Annual Pool Pawty supporting the Roeland Park K9 program, was a splashing success! Pooches and their owners from all over came to enjoy the end of the summer pool season and helped raise about \$400 for Rango, Roeland Park's Police K9 unit. Thank you for enjoying the final dog days of summer with us for a good cause!





# LIGHT POLLUTION: WHY IT'S A PROBLEM AND WHAT YOU CAN DO ABOUT IT

By Melissa Castillo, Sustainability Committee

Light pollution is unwanted or excessive artificial light. It is the human-made alteration of outdoor light levels from those occurring naturally. Light pollution is a problem for multiple reasons. Typically, light is created by electricity, which is likely generated by the burning of fossil fuels. Wasting that energy contributes to global warming and air pollution. But even solar or wind-powered electricity and energy-efficient LED lights can still cause big problems. For starters, light pollution is also like noise pollution in that it can distract and annoy your neighbors. But more importantly, it can disrupt wildlife that are dependent on dark skies or the light of the moon.

Plants and animals have evolved on Earth in connection with the daily cycle of light and dark. Periods of lightness and darkness affect life-sustaining behaviors like reproduction, navigation, sleep, nourishment, and protection from predators. Disrupting those behaviors with artificial light can have deadly effects on amphibians, birds, mammals, insects, and plants.

When humans turn night into day with artificial light, we disrupt amphibians, such as frogs and toads, whose breeding rituals involve nighttime croaking. We disrupt migrating birds that navigate by moonlight and starlight. Artificial light leads them off course and results in the deaths of millions of birds each year that collide with needlessly illuminated buildings and towers. Artificial light can also disrupt the timing of when birds migrate, nest, and forage. Mid-August through mid-October is peak migrating season for birds. For animals that rely on darkness to avoid predators, artificial light can reduce their odds of survival. Many insects are drawn to natural light. When drawn to artificial lights, they can circle until dying from exhaustion. The moths that die before reproducing mean fewer caterpillars, which are the primary food for many bird hatchlings. In fact, insects are food for a wide variety of other animals. Disrupting the lifecycles of insects negatively affects the entire food web. Plants also require periods of darkness for the proper functioning of their metabolism, which affects growth, flowering, fruiting, and going to seed.



What can we do about it? Only use light during nighttime hours when absolutely necessary. If you need light for security, use a motion sensor. Choose light fixtures that shield the light from going upward and direct it instead downward. Only light the exact space and for the exact amount of time required. Choose warmer colored lights (red and yellow) and avoid cooler colored lights (white and blue). The white and blue light waves are more like sunlight, so more disruptive at night. Studies have shown that exposure to blue-rich lights at nighttime has negative impacts on human health. We also evolved with the Earth's cycle of light and darkness. Humans have gazed at the stars from time immemorial. Reducing and eliminating light pollution can make that possible for all of us once again.

## WALK TO SCHOOL DAY

National Walk to School Day is on October 4th. This year, the City of Roeland Park is teaming up with the Roesland PTA to bring back this popular event! Parents and students of Roesland Elementary are invited to join us at 7:30 a.m. at Roeland Park City Hall where RPPD, City Officials, parents and will team up to walk kids to school.

Free snacks and water will be available to fuel your journey! We'll leave City Hall at 7:45 a.m. to get to Roesland by 8:10 am. We hope you'll join us for this safe and fun way to commute to school and experience active transportation.



## Week Without Driving

The Week without Driving Challenge is Oct. 2 - 6. This event was originally started by the Disability Mobility Initiative in Washington State in 2020. The purpose is to draw attention to two critical ideas: 1) approximately 25% of America's population can't drive (for financial, physical, or other

reasons), and 2) the needs of non-drivers are too often disregarded in transportation infrastructure & policies.

This year, the Disability Mobility Initiative is teaming up with America Walks to make this a national event and BikeWalkKC is bringing the movement to Kansas City. If you are interested in participating, sign up online at [americawalks.org/campaigns/national-week-without-driving/](https://americawalks.org/campaigns/national-week-without-driving/).



# Safety Day

Sat. Oct. 7, 11a - 1:30p, City Hall

Join us in parking lot of City Hall at 4600 W. 51st Street for **Safety Day**. Police Chief John Morris will be grilling some tasty barbecue along with sides, and our Diversity, Equity and Inclusion Committee will be handing out ice cream. In addition, Safety Day will feature

- Face Painting
- Bounce House
- Music
- K9 demo
- Police & Emergency equipment display

Safety Day is completely **FREE** and is intended to help improve safety by strengthening bonds between community members and law enforcement. Safety Day is brought to you in partnership with The City of Roeland Park Police Dept, the DEI Committee, and Faith & Blue.



## Tell us your Story!

Interested in sharing your Roeland Park story? The Roeland Park **Ad-Hoc Historical Committee** would love to hear about your life in our community as part of our oral history project. If you have a story to share, please email your contact information (Name, Phone # and Email) to Council Member Kate Raglow, [kraglow@roelandpark.org](mailto:kraglow@roelandpark.org) and we will reach out to you with more details!



## City Contacts



 Search

City Administrator - Keith Moody  
[kmoody@roelandpark.org](mailto:kmoody@roelandpark.org)

Finance Director/Asst. City Administrator -  
Jennifer Jones-Lacy  
[jjones-lacy@roelandpark.org](mailto:jjones-lacy@roelandpark.org)

City Clerk- Kelley Nielsen  
[knielsen@roelandpark.org](mailto:knielsen@roelandpark.org)

Chief of Police- John Morris  
[emorris@roelandpark.org](mailto:emorris@roelandpark.org)

Director of Public Works - Donnie Scharff  
[dscharff@roelandpark.org](mailto:dscharff@roelandpark.org)

Mayor - Michael Poppa  
[mpoppa@roelandpark.org](mailto:mpoppa@roelandpark.org)  
(913) 722-2600

Ward 1 - Jan Faidley  
[jfaidley@roelandpark.org](mailto:jfaidley@roelandpark.org)  
(913) 709-6812

Ward 1 - Tom Madigan  
[tomrpk@gmail.com](mailto:tomrpk@gmail.com)  
(913) 526-6997

Ward 2 - Jen Hill  
[jhill@roelandpark.org](mailto:jhill@roelandpark.org)  
(913) 722-2600

Ward 2 - Benjamin Dickens  
[bdickens@roelandpark.org](mailto:bdickens@roelandpark.org)  
(913) 544-1259

Ward 3 - Trisha Brauer  
[tbrauer@roelandpark.org](mailto:tbrauer@roelandpark.org)  
(913) 722-2600

Ward 3 - Kate Raglow  
[kraglow@roelandpark.org](mailto:kraglow@roelandpark.org)  
(913) 722-2600

Ward 4 - Miel Castagna-Herrera  
[mcastagna-herrera@roelandpark.org](mailto:mcastagna-herrera@roelandpark.org)  
(913) 722-2600

Ward 4 - Michael Rebne  
[mrebne@roelandpark.org](mailto:mrebne@roelandpark.org)  
(913) 228-2650







**OCT. 21**

**ROELAND PARK  
COMMUNITY CENTER  
GRAND RE-OPENING  
& TRUNK OR TREAT**

Join us on October 21st at 10 a.m. for the Roeland Park Community Center Grand Reopening (4850 Rosewood Drive). Significant improvements to the community center will be complete and we want you to celebrate with us! You can take a tour of the renovated community center and learn about programming. We will have a Trunk or Treat for the kids so get your costumes out early and enjoy some family fun in our new and improved space. We hope to see you there!

**ROELAND PARKER**

