



February/March 2026

# THE ROELAND PARKER

Official Newsletter of the City of Roeland Park



## This issue:

Page 2:

Letter from the Mayor  
2025 Resident Survey

Page 3:

Donation Thanks  
Food for FineS  
JCDS Artists  
Mosquito Control Pilot

Page 4:

Community Center News

Page 5:

DEI Spotlight  
Summer Pool Jobs

Page 6:

Meet RP's Newest Staff  
Bulky Item Pick up  
Ripple Reminder

Page 7:

Elected Officials

Page 8:

City Contacts  
Calendar

## Results Are In: 2025 Resident Survey

The City's 2025 Resident Survey shows Roeland Park residents remain highly satisfied, with 95% rating the City as a good or excellent place to live. Public safety, parks, and core services continue to perform well, while resident feedback will help guide future priorities such as development, code enforcement, and sidewalk maintenance. Learn more about the survey results in the Mayor's Letter on page 2.



**MARCH 1-31**

Join us in supporting local families by donating **new** socks to benefit Roeland Elementary and FosterAdopt Connect. Drop off items at City Hall or the Community Center by the end of March.



# LETTER FROM THE MAYOR

Hey RP,

As we begin a new year, I want to thank our residents for continuing to make Roeland Park such a welcoming and connected community.

The results of the City's 2025 Resident Survey reaffirm what many of us already know. Roeland Park remains a place people are proud to call home. 95% of respondents rated our city as a good or excellent place to live, with strong satisfaction reported for public safety, parks and recreation, solid waste services, and overall quality of life. When compared to regional and national benchmarks, Roeland Park continues to perform above average in almost every area.

The survey also helps guide our work ahead. Residents identified managing development, code enforcement, sidewalk maintenance, and continued investments in community safety as priorities. This feedback is invaluable and will play an important role in budgeting and long range planning.

I also want to extend a sincere thank you to everyone who participated in our Holiday Decorating Contest. Your creativity helped brighten our neighborhoods and made Roeland Park an even more festive place to be this season. Choosing the top entries was no easy task, and we thank the Arts Advisory Committee for organizing the contest and touring the city to view the displays. I'm sure I speak for most folks in the community when I say we are already looking forward to seeing what residents create next year.

Thank you for your continued engagement, pride, and participation in our community. Together, we are building a city that is vibrant, welcoming, and responsive to the people who call it home.

- Mayor Michael Poppa

## What to Know



**Perceptions and Ratings of the City Are High**

*Benchmarking*

When compared to ETC Institute's Kansas City Metro and National Averages, Roeland Park performs above the averages in most of the areas assessed.



**Overall Satisfaction with Town Services is Strong**

*Overall Services*

Overall, Roeland Park performed well in key areas such as solid waste services, police services and parks and recreation.



**Opportunities for Improvement for Roeland Park**

*Priorities for Improvement*

The instrument was designed so ETC Institute could develop priorities for improvement. Development activities and code enforcement were highlighted areas for improvement.

**95%**





Respondents who rated Roeland Park as an "excellent" or "good" place to live.

**90%**

Respondents who rated Roeland Park as an "excellent" or "good" place to raise children

**89%**

Respondents who were "very satisfied" or "satisfied" with the overall quality of life in Roeland Park.

- Congratulations to this year's Holiday Decorating Contest winners:**
-  Evan Iliff
  -  Amanda Britton-Carpenter
  -  Jack Crane
  -  Will Harris



Each winner received a check, certificate, and a custom plaque designed by Council Member Matt Lero.

# THANK YOU!

Thank you to our incredible community for your generosity and kindness. Together, we donated more than 580 items to Shelter KC and Big Brothers Big Sisters.

Your support made a real difference through our Holiday Family Adoption, Winter Weather Clothing Drive, Food Drive, and Holiday Kindness Project. Because of you, local families and neighbors received help when it mattered most.

We are deeply grateful for every donation and for the continued support that makes these efforts possible. Thank you for helping build a stronger, more caring community.



The "There's a Better Way" mosquito control pilot program was a success, with **295 residents** signing up to participate. According to the end-of-season survey, 71% of participants who used mosquito dunk buckets and did not spray their yards reported mosquito conditions were better or much better than in previous years. Results were even stronger when neighbors participated and standing water was regularly removed. Scan the QR code below to learn more, and watch the spring Roeland Parker for details on how to participate next summer.



## FOOD FOR FINE\$

Bring boxed or canned non-perishable food items to pay off your fines and help out your local community! Each single food item will count as \$5 off existing charges, up to \$50.

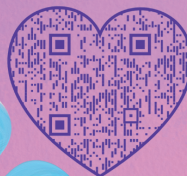


**FEB 2-27**

**RP MUNICIPAL COURT**  
4600 W 51ST ST

## JCDS ARTISTS

Papercrete Works is an employment program offered by JCDS. Papercrete is a construction material that consists of repurposed paper fibers (shredded, recycled newspaper), Portland cement and water. When combined it creates a lightweight, durable and unique material that promotes a cleaner environment. Your Papercrete works purchase is helping provide community integrated employment for people with an intellectual or developmental disability, helping them lead more independent lives.



Emerging Artists is an art as employment program offered by JCDS. The artist collective consists of adult artists with IDD who are passionate and driven to create artwork. The Emerging Artists work in studio at the Johnson County Arts and Heritage Center from 9am-3pm Monday-Friday.

In addition to earning income artists have the door opened to equal citizenship, personal growth, communication, self-expression, and self esteem from the art program. The artists are seen as adult artists not as their disability.







# ROELAND PARK COMMUNITY CENTER

## Adult Program Highlights

### Anti-Valentines Junk Journal

February 11, 5:30 pm, 1- 2 hr. event  
\$20 / \$22 nonresidents

Ditch Valentine's this year in a creative way! Avoid the romance and join a beginner-friendly course all about the art of basic bookmaking and junk journaling. All materials provided.

### Total Body Tone

February 3, 1 pm, 4, 45 min. sessions  
\$39 / \$43 nonresidents

This dynamic class held at the Roeland Park Community Center Fitness Center provides a full body workout, targeting all major muscles groups to help you tone, sculpt, and strengthen your physique.

Visit us at [JCPRD.COM/ACTIVITIES](http://JCPRD.COM/ACTIVITIES) to register.

[WWW.FACEBOOK.COM/ROELANDPARKCOMMUNITYCENTER](http://WWW.FACEBOOK.COM/ROELANDPARKCOMMUNITYCENTER)

### Zumba®

February 7, 9 am, 5 - 50 min. sessions  
\$43 / \$48 nonresidents

Ditch the workout—join the party! Zumba® is a high-energy dance fitness class that combines Latin and international music with easy-to-follow choreography for a total body workout that feels more like a celebration than exercise.

### Restorative Yoga

February 5, 5:15 pm, 4 - 50 min. sessions  
\$38 / \$42 nonresidents

Restorative yoga is a gentle, nurturing practice designed to help you relax deeply and recharge. Using supportive props like blankets and blocks, you'll hold restful poses either seated or lying down for extended periods.

### Program Registration and Front Desk:

(913) 826-3160

### Sports Dome: (913) 362-8700

Please call for open gym and court rental availability.

### Community Center Office Hours

Monday - Friday: 7am - 5pm

Sat - 8am - 1pm

Sunday - closed

## Keep Active this Winter with RPCC!

### 50 Plus

#### Meet, Move & Dance

February 5, 6:30 pm, 4 - 1.5 hr. sessions  
\$45 / \$50 nonresidents

Classes focus on strong, enjoyable dance fundamentals, including rhythm, balance, connection, and lead-follow skills—the foundation of confident social dancing at every level.

#### Comedy Improv Class

February 9, 10 am, 10 – 1.5 hr. sessions  
\$72 / \$74 nonresidents

Perfect for elementary-age students, this high-energy chess class is packed with fast-paced games, colorful silicone wristbands to collect, zany movie days, fun tournaments, and an engaging tactics-based curriculum.

### Youth

#### Mixed Martial Arts (Ages 6-12)

February 4 or March 4, 5 pm, 4 - 1 hr. lessons  
\$38 / \$40 nonresidents

Looking for a fun, high-energy activity that builds your child's confidence, discipline, and fitness? Our Mixed Martial Arts (MMA) classes are the perfect blend of skill-building, self-defense, and character development.

#### Snapology: Wizards & Toy Tales Camp (Ages 5-12)

**\*These Camps are offered as a morning camp, an afternoon camp, or a full day camp.**

February 16, 9 am OR February 16, 1 pm  
\$75 / \$85 nonresidents (half day \$45 / \$50)

Through creative storytelling, hands-on building with LEGO® bricks, teamwork challenges, campers will use engineering skills and imagination to bring magical worlds to life!

## 50 Plus Program Weekly Schedule

Programs held at 4850 Rosewood Dr. Roeland Park KS

50 Plus programs with an \* must register in advance

Monday	Tuesday	Wednesday	Thursday	Friday
CANASTA (1 <sup>st</sup> and 3 <sup>rd</sup> Monday) 1pm	KNITTING GROUP 1pm	PAINT GROUP 9:30 am	MAH JONGG 1pm	HOBBY GROUP 1pm



# DEI SPOTLIGHT

(Diversity, Equity & Inclusion)



## FEBRUARY IS BLACK HISTORY MONTH!

Black History Month is a time to celebrate and honor the rich cultural heritage, achievements, and contributions of Black Americans throughout history. It is a time to celebrate the lasting impact of Black leaders and communities while reflecting on equity, justice, and the stories that continue to inspire progress.

## WAYS TO ENGAGE DURING BLACK HISTORY MONTH

- Support Black owned businesses by dining at local restaurants and sharing your favorites with friends and neighbors.
- Explore Black history in Kansas City by visiting museums, cultural sites, restaurants, and community resources that highlight both historical contributions and present day impact.
- Learn and take action on health equity. Black Americans are twice as likely to develop Alzheimer's disease compared to white Americans. The Alzheimer's Association offers free information and local resources. Visit [alz.org/kansascity](http://alz.org/kansascity) or contact [hamorales@alz.org](mailto:hamorales@alz.org) to learn more.



## MARCH IS WOMEN'S HISTORY MONTH!

Women's History Month is a celebration of the achievements, contributions, and leadership of women throughout history. Held each March, it celebrates the women who have shaped our communities and advanced equality. It is a time to honor the past and present contributions of women and recognize their ongoing impact on a more equitable future.

## WAYS TO ENGAGE DURING WOMEN'S HISTORY MONTH

- Learn about influential women in history through books, documentaries, or podcasts, and share what you discover with others.
- Support women owned businesses in Roeland Park and Johnson County, and look for opportunities to uplift women led organizations.
- Mentor or advocate for women in your workplace and community, and support efforts that advance equity through education, health, and policy.
- Celebrate the women in your life by recognizing their achievements and amplifying stories and work by women authors and creators.



The Roeland Park Aquatic Center is hiring for the upcoming summer 2026 season!

**WE'RE  
HIRING!**

LIFEGUARDS  
SUMMER 2026

### Lifeguards

**\$16/hr and up**  
Gain valuable certifications and emergency response skills with flexible summer scheduling.

### Asst. Pool Manager

**\$19/hr and up**  
Support staffing & daily pool operations while building leadership and supervisory experience.

### Pool Manager

**\$22/hr and up**  
Oversee daily pool ops., ensure safety for all patrons, and lead and supervise staff.

Apply Today!



Questions? Email Nathan Brungardt at [nbrungardt@roelandpark.org](mailto:nbrungardt@roelandpark.org)



## Meet **Brett Lindsey**

Skilled Maintenance Worker/ Equipment Operator

### Q. What inspired you to get into Public Works?

I enjoy the variety of work Public Works offers and the opportunity to help and teach others. It is rewarding to do work that makes a visible difference in the community.

### Q. Where were you before coming to Roeland Park?

I previously worked for Tyson Foods as a lead supervisor.

### Q. What is your favorite thing so far about working for Roeland Park?

I appreciate the diversity of the work and the ability to help others and step in where needed. It has been rewarding to work in a collaborative, service-oriented environment.

### Q. What do you like to do for fun?

I enjoy spending time with my grandkids.

## Bulky Item Pick-up Reminder!

Bulky item pick-up calendar has been adjusted for 2026.



Three items may be set out once per month on the **second full week** of the month.

## Friendly Curbside Ripple Reminder!

Residents can recycle glass containers through Ripple's curbside pick up on your **first** trash collection pickup day of each month! Recycling just one glass bottle saves enough electricity to light a 100-watt light bulb for four hours.

Sign up for collection day reminders at [rippleglass.com/roeland-park](http://rippleglass.com/roeland-park) or scan the QR code.



RippleGlass

## Meet **Cece Riley**

Management Analyst



### Q. What inspired you to get into local government administration?

I am passionate about serving the community and believe local government is where I can make the most meaningful impact. I was also inspired by my mom, who has spent her career in public service and showed me firsthand the value of leading with integrity, care, and purpose.

### Q. Where were you before coming to Roeland Park?

I worked as a City Planner in Lawrence, Kansas for the past several years.

### Q. What is your favorite thing so far about working for Roeland Park?

Roeland Park feels like a true keystone community within the Kansas City metro, with a character all its own. I am still early in my time here, but I am excited for what is ahead and eager to learn from residents and City Council how I can best serve this community.

### Q. What do you like to do for fun?

I love being outdoors whenever I can, especially walking, gardening, or exploring nature. I also enjoy baking, rewatching The Office and Parks & Rec, and listening to a good audiobook.



# ELECTED OFFICIALS

## Mayor

Michael Poppa  
mpoppa@roelandpark.org

## Ward 1

Jan Faidley  
jfaidley@roelandpark.org

Tom Madigan  
tmadigan@roelandpark.org

## Ward 2

Jen Hill  
jhill@roelandpark.org

Benjamin Dickens  
bdickens@roelandpark.org

## Ward 3

Emily Hage  
ehage@roelandpark.org

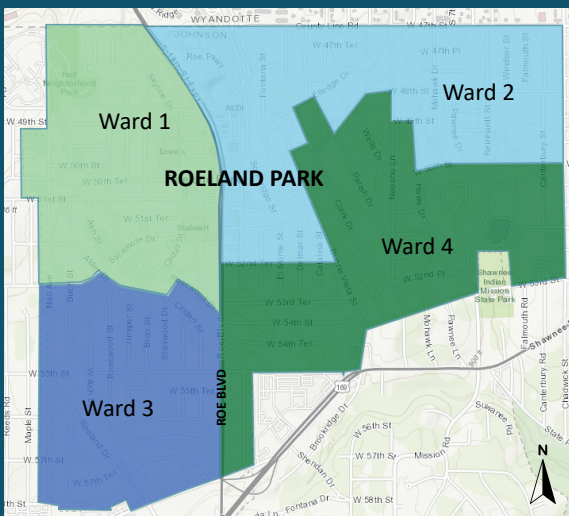
Harold Morales  
hmorales@roelandpark.org

## Ward 4

Debbi Schraeder  
dschraeder@roelandpark.org

Matt Lero  
mlero@roelandpark.org

Unsure which ward you live in? See below!



# GET TO KNOW YOUR NEW COUNCIL MEMBERS

At the December 1, 2025 meeting, returning City Council members Tom Madigan (Ward 1), Jen Hill (Ward 2), and Mayor Michael Poppa were sworn in. We also welcomed two new Councilmembers - Harold Morales and Debbi Schraeder



*Harold Morales*  
Ward 3 Councilmember

### Q. Why did you want to serve on City Council?

I wanted to serve on City Council because I care deeply about Roeland Park and its future. After being involved in several committees, I saw this as an opportunity to make a meaningful impact— help to preserve the city’s unique charm while ensuring it remains a place where everyone can thrive.

As a public health strategist and Ward 3 resident, I’ve witnessed how inclusive policies transform lives, and I’m committed to making sure every neighbor feels heard, safe, and supported.

### Q. What’s your favorite thing about Roeland Park?

My two favorite things about RP are the friendliness of neighbors and how environmentally focused the city is.

### Q. Tell us one fun or unexpected fact about you?

I am an entomologist by training, focusing on mosquito control and abatement. I don't know much about spiders (technically not insects).



*Debbi Schraeder*  
Ward 4 Councilmember

### Q. Why did you want to serve on City Council?

While contemplating whether to run for City Council, there was one thought that outweighed all others-- I am happiest when I am serving others.

### Q. What’s your favorite thing about Roeland Park?

My favorite thing about Roeland Park is the community itself;

it is made up of people who genuinely care about the city, their neighbors, and the future of Roeland Park. If you want to put a smile on your face, just go for a walk!! The amount of friendly people you will come across is unlike any other community!!

### Q. Tell us one fun or unexpected fact about you?

I was first elected to the Roeland Park City Council over twenty years ago!



FEBRUARY

2026

SUN	MON	TUE	WED	THU	FRI	SAT
1	2	3	4	5	6	7
8	9	10	11	12	13	14
15	16	17	18	19	20	21
22	23	24	25	26	27	28

MARCH

2026

SUN	MON	TUE	WED	THU	FRI	SAT
1	2	3	4	5	6	7
8	9	10	11	12	13	14
15	16	17	18	19	20	21
22	23	24	25	26	27	28
29	30	31				

- City Council
- Planning Commission
- Bulky Item Pick-up



**Roeland Park City Hall**

4600 W 51st St  
913-722-2600

[www.roelandpark.org](http://www.roelandpark.org)



**City Contacts**

**Keith Moody**, City Administrator  
kmoody@roelandpark.org

**Jennifer Jones-Lacy**, Asst. City Administrator  
jjones-lacy@roelandpark.org

**Kelley Nielsen**, City Clerk  
knielsen@roelandpark.org

**Cory Honas**, Chief of Police  
chonas@roelandpark.org

**Donnie Scharff**, Public Works Director  
dscharff@roelandpark.org

**Nathan Brungardt**, Parks & Rec Superintendent  
nbrungardt@roelandpark.org